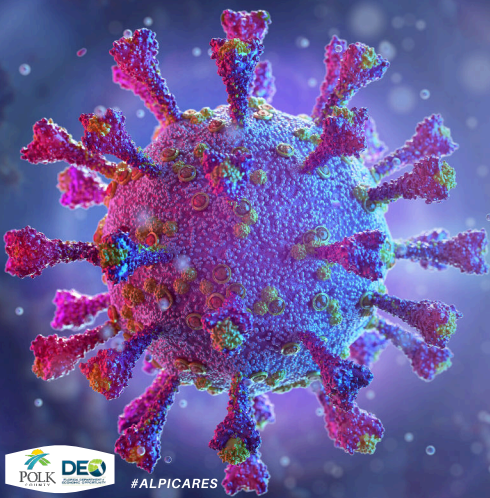


THE AGRICULTURAL AND LABOR PROGRAM, INC.

Providing a constant flow of children and family support services since 1968.



COVID-19 RELIEF FUNDS

**CALL 1.844.356.8138
FOR APPOINTMENT
OR APPLY ONLINE AT
WWW.ALPI.ORG**



#ALPICARES

POLK COUNTY UNITES

The ALPI has received funds to assist Polk County residents affected by the COVID-19 virus.

Eligible assistance includes:

- Rent/Mortgage
- Utilities
- Food
- Childcare and Adult Care
- Other emergency uses specifically authorized under the CARES Act

No income requirement, to qualify for the Polk County Unites assistance.

CSBG CARES ACT

The ALPI has received funds to assist residents affected by the COVID-19 virus, in the following counties: Glades, Hendry, Highlands and Polk.

Eligible assistance includes:

- Rent/Mortgage
- Utilities (electric and water)
- Food
- Childcare and Adult Care
- Re-employment
- Other emergencies

Household Income Eligibility:

Household of 1: \$25,520
 Household of 2: \$34,480
 Household of 3: \$43,400
 Household of 4: \$52,400
 Etc.

LIHEAP CARES ACT

The ALPI has received funds to assist residents affected by the COVID-19 virus, in the following counties: Collier, Glades, Hendry, Highlands, Martin, Polk and St. Lucie.

Eligible assistance includes:

- Utilities

Household Income Eligibility:

Household of 1: \$18,735
 Household of 2: \$25,365
 Household of 3: \$31,995
 Household of 4: \$38,625
 Etc.