

The Agricultural and Labor Program, Inc.
2016 Annual Report



A Better Tomorrow is Today's Objective

To provide a mechanism toward achieving and maintaining family stability and economic self-sufficiency.

VISION



The Agricultural and Labor Program, Inc. (ALPI), headquartered in the city of Winter Haven, Florida, is an IRS certified 501(c)(3) private, nonprofit organization. The Agricultural and Labor Program is a direct descendant of the Agricultural and Labor Project, established in 1968 by the Coca-Cola Company to improve the quality of life for farm workers in their Florida citrus operations. Today, ALPI serves the total spectrum of socially and economically disadvantaged children and families throughout Florida.

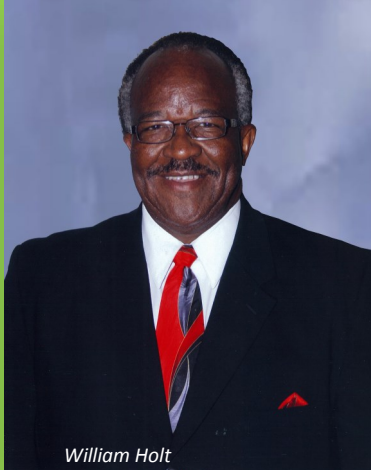
In the early 70's, the organization made available child care services to the children of migrant and seasonal workers when no other service providers were available to meet the child care needs of these families. Since the late 70's, ALPI has continued to operate as the Central Agency for Subsidized Child Care Services that provides child care for as many as 6,000 children per year!

Over the years, a vast network has been established by ALPI. This network is comprised of agencies, churches, organizations and private groups and/or individuals whereby some provide direct financial assistance, others distribute applications for services. Partnerships and collaborative efforts between ALPI and the communities we serve are crucial to the success of service delivery.

In the years since its inception, The Agricultural and Labor Program, Inc. has continued to grow and to expand efforts to assist those persons that the organization was chartered to serve. This effort is continuous and will exist as long as there are persons needing services.

To propose, implement and advocate developmental and human service delivery programs for the socially and economically disadvantaged, children and families, and farmworkers.

MISSION



William Holt

ALPI

The Agricultural and Labor Program, Inc.

A Better Tomorrow Is Today's Objective

This amazing organization has been the catalyst for sustaining and changing the lives of hundreds of thousands of individuals, children and families. ALPI has never wavered while encountering budget cuts, political gamesmanship and countless other negative influences with the power to cause havoc on critical services provided to so many who depend on our delivery system. Poverty is the great motivator for organizations such as ALPI to continue advocating and seeking funding opportunities. This funding is what fuels the work it takes to continue making a difference in the lives of those who are less fortunate and desperately in need. I appeal to everyone to please get involved and do whatever you can to help make a difference. Perhaps its writing a letter, making a call, or pressing the political community, including local, state and national representatives, to keep the focus on the mission that drives the vehicle for social justice: community action.

The funding required to achieve our great mission on a daily basis is of critical importance. After all, funding is what fuels the mission and thereby gives flight to the vision we have of creating economic self-sufficiency for those we are entrusted to help. In this regard, we are fortunate to have the best accountability navigator I have ever had the pleasure to work with, Deloris Johnson. As Chief Executive Officer of this agency, her leadership and financial savvy in managing over half a billion dollars during her tenure, has insured the consistent growth of this agency. This growth has allowed ALPI to increasingly change more and more lives every year. Her strong work ethic and ability to stay-the-course serve as a powerful examples to all of us.

Lastly, I wish to thank our Chief Executive Officer, corporate members, friends, community leaders and staff for support given to our program. A special heart-felt thanks to a dedicated group of fiduciary leaders, the ALPI Board of Directors ... your commitment to both the vision and mission of this agency is exemplary and greatly appreciated.

William Holt

William Holt
ALPI Board Chairperson

CONTENTS

Greetings and Proclamations	1
Annual Meeting Highlights	5
2015 Board of Directors	6
Awards and Recognition	7

ACCOMPLISHMENTS & OPPORTUNITIES

Governance and Leadership Development	8
Advocacy and Community Engagement Partnerships	10
Programs and Family Support Services Overview	12
Family Self-Sufficiency Success Stories	21
Children and Youth Development Success Stories	22

FUNDING & COMMUNITY ECONOMIC DEVELOPMENT OPPORTUNITIES

Jobs and Professional Development Opportunities	23
Community Resource Development Opportunities	24
Administration and Program Opportunities	24

SPECIAL THANKS & RECOGNITION

Community Support	25
-------------------	----

PROGRAM SERVICE DELIVERY SITES

ALPI Head Start/Early Head Start Center Locations	26
CSBG Service Delivery Sites	27
Low-Income Home Energy Assistance Service Delivery Sites	28
Farmworker Emergency Assistance Service Delivery Sites	29

2014-2015 FINANCIAL POSITION

Financial Highlights	30
----------------------	----

CONTACT INFORMATION	31
----------------------------	-----------

Message from the CEO



The ALPI 2016 Annual Corporate Meeting & Luncheon Theme, *"A Better Tomorrow is Today's Objective"*, is a true assertion that all efforts the organization embarked upon during its' 2014-2015 program year continued to provide meaningful opportunities for all people in need to have a sustainable social and economic future.

A sustainable framework, according to **Amartya Kumar Sen** (an Indian economist and philosopher) borders on the following dimensions for social sustainability:

Equity - the community provides equitable opportunities and outcomes for all its members, particularly the poorest and most vulnerable members of the community; **Diversity** - the community promotes and encourages diversity; **Quality of life** - the community ensures that basic needs are met and fosters a good quality of life for all members at the individual, group and community level (e.g. health, housing, education, employment, safety, etc.); **Democracy and governance** - the community provides democratic processes and open and accountable governance structures; **Maturity** - the individual accepts the responsibility of consistent growth and improvement through broader social attributes (e.g. communication styles, behavioral patterns, indirect education and philosophical explorations)

I am pleased to report in this year's annual report notable accomplishments to demonstrate that Agricultural and Labor Program, Inc. programs and service delivery efforts continue to provide opportunities for all people, particularly the poorest and most vulnerable members of the community, to help themselves and each other to secure and maintain self-sufficiency.

My sincere "thanks" to the ALPI Board of Directors (under the leadership of Mr. William Holt) ALPI's stakeholders, including our Regional Advisory Councils, clients, ALPI employees, service delivery partners and sponsors for your untiring support and participation this past program year. Together we are making a difference because... *"A Better Tomorrow is Today's Objective"*

Sincerely,


Deloris Johnson, CEO

GREETINGS & PROCLAMATIONS



BILL NELSON
FLORIDA

January 23, 2016

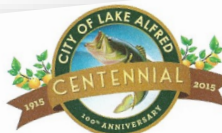
Ms. Deloris Johnson
Chief Executive Officer
Agriculture and Labor Program, Inc.
300 Lynchburg Road
Lake Alfred, Florida 33850

Dear Ms. Johnson:

Congratulations! Although I am unable to be with you, I join you in spirit as you gather for your 48th Annual Corporate Meeting and Luncheon to celebrate years of providing invaluable services to the citizens of Florida. I salute your commitment and dedication to assisting those most in need by providing resources related to jobs, social services, health care, education, and so much more.

As the U.S. Senator from Florida, I am grateful for the many ways in which you help those in your care find long term solutions. Thank you for all that you do for our community and the great state of Florida.

Sincerely,



Proclamation

Whereas, the Agricultural and Labor Program, Inc. (ALPI) is a private non-profit community based organization that has been helping people and changing lives since 1968; and

Whereas, ALPI's purpose is to help people maintain family strength, provide avenues for financial assistance, and create economic stability; and

Whereas, in the 2014-2015 fiscal year, ALPI enrolled 210 families into the Community Service Block Grant self-sufficiency program, as well as 9 youth were provided summer job opportunity and 11 adults were provided with work experience of which 7 became gainfully employed; and

Whereas, Head Start / Early Head Start services were provided to 926 children and their families in Polk and St. Lucie Counties through the Agriculture and Labor Program, Inc.; and

Whereas, additionally ALPI provided a total of 358,441 meals to pre-school and school children via the Child Care Food and Nutrition Program; and

Whereas, the Low Income Home Energy Assistance Program (LIHEAP) services were expanded in partnership with 15 non-profit organizations to provide assistance to a total of 8,322.

Whereas, the month of January 2016 will commemorate 48 years of providing a constant flow of community support services to help socially and economically disadvantaged children and families.

Therefore, BE IT RESOLVED that the City of Lake Alfred formally recognize January 23, 2016 as

"Agricultural and Labor Program, Inc. Day"

in the City of Lake Alfred, Florida and urge all citizens to recognize services needed by those less fortunate in our community and encourage everyone to support the Agricultural and Labor Program, Inc.

IN WITNESS WHEREOF, I have hereunder set my hand this 7th day of December, 2015.

Charles Lake, Mayor
City of Lake Alfred, Florida



CONGRESSMAN DANIEL WEBSTER
10TH CONGRESSIONAL DISTRICT OF FLORIDA

December 14, 2015

Ms. Deloris Johnson
Chief Executive Officer
The Agricultural and Labor Program, Inc.
P.O. Box 3126
Winter Haven, FL 33885

Dear Ms. Johnson,

Congratulations on hosting the 48th Annual Corporate Meeting and Luncheon for the Agricultural and Labor Program, Inc. It is my pleasure to thank you for providing support and care to children and families in our community.

Local service organizations have the distinct ability to identify and meet the individual needs of specific communities. Thank you for caring about the children and families around you, and for serving those who come across your path. Your dedicated staff and volunteers have left a positive impact on many lives.

It is an honor to serve the people of Central Florida and represent you in the United States House of Representatives.

Your servant,

Daniel Webster
Member of Congress

1039 LONGWORTH HOB, WASHINGTON, DC 20515 | 202-225-2176
300 WEST PLANT STREET, WINTER GARDEN, FL 34787 | 407-654-5705
WWW.WEBSTERHOUSE.GOV | [TWITTER.COM/REPWEBSTER](https://twitter.com/REPWEBSTER) | [FACEBOOK.COM/REPWEBSTER](https://facebook.com/REPWEBSTER)

GREETINGS & PROCLAMATIONS

PROCLAMATION

IN HONOR OF
THE 48th ANNIVERSARY
OF
THE AGRICULTURAL AND LABOR PROGRAM, INC.

WHEREAS, The Agricultural and Labor Program, Inc. (ALPI) is a private, non-profit, community based organization chartered by the State of Florida to provide assistance and services to the migrant and seasonal farm worker population, the rural poor and disenfranchised throughout the State; and

WHEREAS, The ALPI is based on five underlying principles that guide all its activities: (1) Involvement of People; (2) Emphasis on long-term accomplish rather than promises; (3) Assurance of economic viability; (4) Emphasis on self-help; and (5) A sound integrated total systems approach; and

WHEREAS, services have included but not limited to: CSBG, Head Start/Early Head Start; Voluntary Pre-Kindergarten; Child Care Food and Nutrition; LIHEAP; Housing Mitigation; HUD Housing Counseling; and Training & Technical Assistance

WHEREAS, January 23, 2016 marks the 48th Anniversary of ALPI providing A Constant Flow of Community Services to help socially and economically disadvantage children and families;

NOW, THEREFORE, I, Sharon Schuler, by virtue of the authority vested in me as Mayor of the City of Avon Park, do hereby proclaim January 23, 2016 as: **THE AGRICULTURAL AND LABOR PROGRAM, INC., DAY**

In the City of Avon Park, Florida we urge all citizens to recognize services needed by those less fortunate in our community and encourage everyone to support The Agricultural and Labor Program, Inc.

IN WITNESS WHEREOF, I have hereunto set my hand this
14th day of December, 2015

Sharon Schuler



HIGHLANDS COUNTY BOARD OF COUNTY COMMISSIONERS

December 21, 2015

Greetings,

It is my honor to welcome the participants of the Agricultural and Labor Program, Inc.'s (ALPI) 48th Annual Corporate Meeting and Luncheon. I appreciate this opportunity to thank each and every member of your organization for their hard work and continuing commitment to helping the poor and underserved.

Your theme of "A Better Tomorrow is Today's Objective" is certainly appropriate considering ALPI's legacy of providing grants, educational opportunities, child care and nutrition services, and the Low Income Home Energy Assistance Program - all programs offering critical life lines to those most in need in our local communities.

Please accept my sincere wishes for a successful and enjoyable corporate meeting,

James L. Brooks

James L. Brooks, Chairman
Highlands County Board of County Commissioners

P. O. Box 1926
Sebring, Florida 33871-1926
Phone (863) 402-6500
Fax (863) 402-6835



SCHOOL BOARD OF POLK COUNTY

P.O. BOX 391
BARTOW, FLORIDA 33831
(863) 534-0500 • SUNCOM 515-1321
1915 SOUTH FLORAL AVENUE
BARTOW, FLORIDA 33830

January 5, 2016

Board Members

BOARD CHAIR
KAY FIELDS
DISTRICT 1

HUNT BERRYMAN
DISTRICT 1

LORE CUNNINGHAM
DISTRICT 2

HAZEL SELLERS
DISTRICT 3

DICK MULLENAX
DISTRICT 4

LYNN WILSON
DISTRICT 6

TIM HARRIS
DISTRICT 7

Ms. Deloris Johnson
Chief Executive Officer
The Agricultural and Labor Program, Inc.
300 Lynchburg Road
Lake Alfred, Florida 33850-2576

Dear Ms. Johnson:

Thank you for the invitation to attend ALPI's 48th Annual Corporate Meeting and Luncheon on Saturday, January 23rd. On behalf of the Polk County School Board, I would like to congratulate ALPI on their continuing support of the children and families across Polk County.

Through your programs and services those who face social and economic challenges are provided the health and social services needed as well as assistance with housing and employment. Their needs are identified and addressed but more importantly, they are given hope for a brighter future.

May the coming year bring you and ALPI continued success; after all, "A Better Tomorrow is Today's Objective."

Sincerely,

Kay Fields

Kay Fields
Board Chair

KF/jac

Polk County Schools
an equal opportunity
institution for education
and employment



R. HOWARD WIGGS
MAYOR

January 23, 2016

Deloris Johnson, Chief Executive Officer
The Agricultural and Labor Program, Inc.
Post Office Box 3126
Winter Haven, Florida 33885

Dear Ms. Johnson:

As Mayor of the City of Lakeland, and on behalf of my colleagues on the City Commission, I would like to affirm our support of the mission and guiding principles of the Agricultural and Labor Program, Inc.

The City of Lakeland believes ALPI is an integral component to improving the quality of life for the children and families of our community. Your advocacy and program delivery role is to be commended as we encourage you to look for ways to continuously improve, while engaging the broader community to assist you in your efforts.

Congratulations to you on the many achievements of ALPI and best wishes for a successful 2016 Annual Meeting!

Sincerely,

R. Howard Wiggs

R. Howard Wiggs
Mayor

GREETINGS & PROCLAMATIONS



SCHOOL BOARD OF POLK COUNTY

P.O. BOX 391
BARTOW, FLORIDA 33831 (863) 534-0500 1915 SOUTH FLORAL AVENUE
BARTOW, FLORIDA 33830

January 23, 2016

Board Members

BOARD CHAIR
KAY FIELDS
DISTRICT 5
HUNT BERRYMAN
DISTRICT 1
CORE CUNNINGHAM
DISTRICT 2
HAZELNELLERS
DISTRICT 3
DICK MULLINAX
DISTRICT 4
LYNN WILSON
DISTRICT 6
TIM HARRIS
DISTRICT 7
C. WESLEY BRIDGES, II
Central Contact

Administration
KATHRYN M. LEROY
Superintendent

On behalf of Polk County Public Schools, it is with great pleasure that I welcome you to the 48th Annual Corporate Meeting and Luncheon hosted by the Agricultural and Labor Program, Inc. ALPI's mission and guiding principles correlate directly with this year's theme, "A Better Tomorrow is Today's Objective."

Polk County Public Schools is a proponent of self-sufficiency through our mission of offering a high quality education to all students. It is our belief that education is a fundamental component to becoming self-sufficient, enthusiastic members of society, beginning with our youngest members. We applaud and thank you for the Head Start/Early Head Start and School Readiness opportunities you provide!

The vast resources that The Agricultural and Labor Program, Inc. provide indeed serve the needs of a diverse Polk County community. Doing the impossible, the presence and collaboration of staff, constituents and partnerships, the needs of children and families facing social and economic challenges are met. Kudos to you!

It is my pleasure to thank you for attending the 48th Annual Corporate Meeting and Luncheon and for your unwavering support of the ALPI Organization.

Best wishes for continued success.

Sincerely,

Kathryn M. Leroy
Superintendent

Proclamation



WHEREAS, The Agricultural and Labor Program, Inc. (ALPI) is a private, non-profit, community based organization that has been helping people and changing lives since 1968; and

WHEREAS, ALPI is based on five underlying principles that guide all its activities: (1) Involvement of People; (2) Emphasis on long-term accomplishments rather than promises; (3) Assurance of economic viability; (4) Emphasis on self-help; and (5) A sound integrated total systems approach; and

WHEREAS, ALPI's focus is to provide a mechanism toward achieving and maintaining family stability and economic self-sufficiency. Through their vast resources we will address the areas of: jobs and income, housing, education, social services, health, training, and community relations. We will continue to serve as a source of information and hope in the community, as a clearinghouse for community needs, and in the provision of a coordinated (mechanism) approach to the delivery of human services; and

NOW THEREFORE, I, Kenneth Kipp, as Mayor of the City of Haines City, do hereby proclaim and recognize the 23rd day of January, 2016 as:

**The 48th Annual Corporate Meeting and Luncheon:
"A Better Tomorrow is Today's Objective"**

in Haines City, Florida in recognition and appreciation of the services provided by this agency.

IN WITNESS WHEREOF, I have hereunto set my hand and caused the seal of the City of Haines City to be affixed this 7th day of January 2016.

CITY OF HAINES CITY, FLORIDA



Mayor, Kenneth Kipp



December 16, 2015

Ms. Deloris Johnson
Chief Executive Officer
The Agricultural and Labor Program, Inc.
300 Lynchburg Road

Dear Ms. Johnson:

On behalf of the City of Bartow, it is my pleasure to acknowledge the 48 years of service provided by the Agricultural and Labor Program, Inc. to the most vulnerable of our county's citizens ... migrant farmworkers and low income citizens.

The services you provide, in "helping people to help themselves", and your dedication to the citizens of the Bartow community is greatly appreciated.

Congratulations to you on the many achievements of the Agricultural and Labor Program, Inc. and best wishes for a successful 2016 Annual Meeting and Luncheon!

City of Bartow, Florida

Mayor J. Adrian Jackson

*Job Well Done!!
Thanks*

450 North Wilson Avenue • P.O. Box 1069 • Bartow, Florida 33831 • (863) 534-0100



Proclamation

WHEREAS, it has been determined:

1. The Agricultural and Labor Program, Inc. (ALPI) is a private, non-profit community based organization chartered by the State of Florida to provide assistance and services to the migrant and seasonal farm worker population, the rural and disenfranchised throughout the State.
2. ALPI is based on five underlying principles that guide all its activities: (1) Involvement of People; (2) Emphasis on long-term accomplishment rather than promises; (3) Assurance of economic viability; (4) Emphasis on self-help; and (5) A sound integrated total systems approach.
3. Services in the State of Florida have included but not limited to Education, employment & Training, Food and Nutrition, Health/Medical, Low Income Home Energy Assistance Program/Elderly Home Emergency Assistance Program (LIHEAP/EHEAP), Housing, Head Start, and Subsidized Child Care.
4. In St. Lucie County specific services have included our involvement in the local Regional Advisory Council, LIHEAP/EHEAP, and more importantly, the services to over 11,000 Head Start children.
5. January 23, 2016 marks the 48th Anniversary of ALPI ... "A Better Tomorrow is Today's Objective".

NOW, THEREFORE, BE IT RESOLVED:

St. Lucie County proclaims January 23, 2016 as "AGRICULTURAL AND LABOR PROGRAM, INC. DAY" in St. Lucie County, Florida and congratulate the Agricultural and Labor Program, Inc. on their 47th Anniversary.

December 16, 2015
Date

Kim Johnson, Chairman
St. Lucie County Board of County Commissioners

GREETINGS & PROCLAMATIONS



WHEREAS, the Agricultural and Labor Program Inc. (ALPI) is a nonprofit organization that serves socially and economically disadvantaged children and families and farm workers throughout Florida; and

WHEREAS, ALPI's purpose is to help people maintain family stability and economic self-sufficiency; and

WHEREAS, the program addresses jobs and income, housing, education, social services, health, training and community relations and serves as a source of information and hope in the community; and

WHEREAS, in Volusia County, ALPI provides vocational training to students with farming backgrounds through its technical education center in DeLand; and

WHEREAS, 93 percent of ALPI's 2014-2015 budget of \$17,297,337 was earmarked to address the needs of children and families facing social and economic challenges due to unemployment, increased utility costs, or mortgage foreclosure; **NOW THEREFORE**,

WE, THE COUNTY COUNCIL OF VOLUSIA COUNTY, FLORIDA, do hereby proclaim January 23, 2016, as:

"ALPI DAY"

in Volusia County and urge all residents to recognize the contributions this organization has made to our community.

Dated this 23rd day of January, A.D. 2016

COUNTY COUNCIL
VOLUSIA COUNTY, FLORIDA

JASON P. DAVIS, County Chair

PAT PATTERSON, District 1, Vice Chair

JOSHUA J. WAGNER, District 2

JOYCE M. CUSACK, At-Large

DEBORAH DENYS, District 3

DR. FRED LOWRY, District 5

Proclamation

Polk County Board of County Commissioners

WHEREAS, the mission of The Agricultural and Labor Program, Inc. (ALPI) is to propose, implement and advocate developmental and human service delivery programs for the socially and economically disadvantaged, children and families and farm workers; and

WHEREAS, the Agricultural and Labor Program, Inc. is celebrating the 48th Annual Corporate Meeting and Luncheon on Saturday, January 23, 2016, with the theme "A Better Tomorrow is Today's Objective"; and

WHEREAS, 93% of ALPI's 2014-2015 agencywide budget of \$17,297,337 was used to address the needs of children and families facing social and economic challenges due to unemployment, increased utility costs, mortgage foreclosure & limited food, shelter and affordable early child care; and

WHEREAS, ALPI programs consist of Employment Opportunities, Community Services Block Grants, Farmworkers Vocational Training & Emergency Assistance, Head Start/Early Head Start, School Readiness Opportunities, Child Care Food & Nutrition Services, HUD Housing Counseling and Low Income Home Energy Assistance—LIHEAP.

NOW, THEREFORE, BE IT PROCLAIMED, that the Board of County Commissioners, in Polk County, Florida, in regular session, duly assembled, does hereby proclaim January 23, 2016 as

"the 48th Anniversary of Agricultural and Labor Program, Inc. (ALPI)"

Dated this 15th day of December, 2015.

Attest:

Stacy M. Butterfield
Clerk of Courts

John E. Hall, Chairman

Melony M. Bell

R. Todd Dantzler

George M. Lindsey III

PROCLAMATION

City of Auburndale
State of Florida

IN HONOR OF THE 48th ANNIVERSARY OF
THE AGRICULTURAL AND LABOR PROGRAM, INC.

WHEREAS, The Agricultural and Labor Program, Inc. (ALPI) is a private, non-profit, community based organization that has been helping people and changing lives since 1968;

WHEREAS, The ALPI utilizes various funding sources to maintain utility costs, etc.;

WHEREAS, The ALPI provides Head Start/Early Head Start and Child Development Services to over a thousand families annually in partnership with city and county government, public schools, the United Way, and Early Learning Coalitions;

WHEREAS, The ALPI provided Community and Family Support Services to 8,322 clients through Low Income Home Energy Assistance, Child Care programs, Farm worker Training and Emergency Services, Child Care, Before and After School Care; and

WHEREAS, 2016 will commemorate 48 (forty-eight) years of providing a constant flow of community support services to provide a mechanism toward helping socially and economically disadvantaged children and families achieve and maintain family stability and economic self-sufficiency.

NOW, THEREFORE, I Timothy J. Pospichal by virtue of the authority vested in me as Mayor, do hereby proclaim January 23, 2016 as:

THE AGRICULTURAL AND LABOR PROGRAM, INC. 48th ANNIVERSARY DAY

in Auburndale, Florida in recognition and appreciation of the services provided by this agency.



IN WITNESS WHEREOF, I have hereunto set my hand and caused the Seal of the City of Auburndale to be affixed this 7th day of December, A.D., 2015.

Timothy J. Pospichal

CITY OF FORT PIERCE



Office of the Mayor and City Commission
City Hall, 100 North US 1
P.O. Box 1480 Fort Pierce, FL 34954-1480
(772) 487-3955 - www.CityOfFortPierce.com

December 8, 2015

Agricultural and Labor Program, Inc.
Deloris Johnson, CEO
2202 Avenue Q
Fort Pierce, FL 34950

Dear Ms. Johnson:

On behalf of the City of Fort Pierce and as Mayor, I would like to congratulate you on your 48th Annual Corporate Meeting and Luncheon.

The City of Fort Pierce has undergone many changes in our long history. Many of these changes were due to the involvement of organizations such as yours that address the needs of children and families facing economic challenges. ALPI has provided many years of successful Head Start programs in our community helping people and changing lives.

We look forward to your group's continued involvement and success of your contributions to the citizens of the City of Fort Pierce and St. Lucie County.

Sincerely,

Linda Hudson
Linda Hudson
Mayor

Annual Meeting Highlights



ALPI's 2016 Annual Corporate Meeting and Luncheon was held on Saturday, January 23, 2016, at the Doubletree by Hilton Orlando at SeaWorld Hotel in Orlando, Florida. This year's meeting marked 48 years of the Agricultural and Labor Program, Inc. providing services to socially and economically disadvantaged children and families throughout the State of Florida. Over 400 Corporate partners, Board members, and guests attended ALPI's largest annual

event. The theme for this year's event was: *"A Better Tomorrow is Today's Objective."*

Mistress of Ceremonies for this year's luncheon was Patricia Gamble of Lakeland, FL (ALPI Board Member). The Welcome and Occasion message was delivered by LaVita Holmes of Clewiston, FL (ALPI Board Member). Words of Inspiration were shared by the Reverend Vernon McQueen of Sanford, FL (ALPI Board Member), followed immediately by the message from the ALPI Board Chairperson, William Holt of Vero Beach, FL. Guests enjoyed beautiful music performed by Tia Crockett. The event's keynote speaker, Lucas D. Boyce, was introduced by Josephine Howard of Haines City, FL (ALPI Board Secretary).

Lucas Daniel Boyce is the author of *Living Proof: From Foster Care to the White House and the NBA*, published in January 2011. This powerful story follows Boyce, who was a former foster care child born premature to an alcohol and drug addicted teenager, and how he overcame daunting life challenges in pursuit of his dreams. Developmentally delayed as a result of his birth mother's abuse, Boyce struggled and ended up failing kindergarten. However, his adoptive mother didn't cast him aside as another tragic statistic. Instead, Dorothy Boyce instilled in her son principles that drove his determination to overcome the cards he'd been dealt. Boyce is the former Director of Business Development and Legislative Affairs for the Orlando Magic, where his responsibilities included strategic business planning and statewide legislative and government affairs. Prior to the Magic, Boyce served at the White House in the Office of Political Affairs where he managed political activity and key races across the plains southwest region of the

United States. He also coordinated proactive communication, public relations and education outreach across diverse communities, constituencies and issues on behalf of the President and much more.

Mr. Boyce described his early childhood in vivid detail, explaining that regardless of whatever disadvantages or setbacks you may be forced to work through, you don't have to, nor should you want to, accept them as anything but opportunities for success. He encouraged guests to be "exactly who they were created to be and do big things, just as God intended." Boyce explained that our call is to be unlike everyone else and that rising above the crowd will only set us apart, empowering us to live a more personally fulfilling life. "Champions and leaders, those who will do big things, those who will help and heal, those who open their minds and hearts will believe and accomplish the impossible. You are a generation rising with tasks of leadership to embrace, because NOW is the time and this is the place." He closed his dynamic and passionate address by challenging everyone to live life at a higher level and be willing to take enormous action toward our goals so that we too may experience success in our lives.

Following the speaker, guests were recognized by Dorothy Curry of Sanford, FL (ALPI Board Member). Awards and Recognitions were bestowed by Deloris Johnson of Lakeland, FL (ALPI Chief Executive Officer) and William Holt (ALPI Board Chairperson) - both pictured right. Program participants were acknowledged by Marjorie Gaskin of Fort Pierce, FL (ALPI Board Member), with Board installation performed by Jonathan Thiele, Esq. of Lakeland, FL (ALPI Board Counsel). Closing remarks were given by William Holt, ALPI Board Chairperson.



2015 Board of Directors

William Holt, Board Chairperson

Low Income Sector Designee

Eastern Region Advisory Council - Chairperson

David Walker, Board Vice-Chairperson

Private Sector Designee

Law Office of David Walker, Esq.

Josephine Howard, Board Secretary

Public Sector Designee for

Mayor Roy Tyler - City of Haines City

Marjorie Gaskin, Board Treasurer

Public Sector Designee for

Commissioner Rufus Alexander - City of Ft. Pierce

Patricia Brown, Board Member

Public Sector Designee for

Commissioner John Ahern - City of Moore Haven

Annessa Chilous, Board Member

Low Income Sector Designee

Southern Region Advisory Council Member

Katie Clarke, Board Member

Private Sector

Lakeview Park Homeowner Association, Pres.

Dorothy Curry, Board Member

Public Sector Designee for

Commissioner Velma Williams – City of Sanford

Alexis Echeverria, Board Member

Private Sector Designee

Polk Works - Project Manager

Patricia Gamble , Board Member

Private Sector Designee

FL Department of Revenue - Tax Specialist I

Marva Hawkins, Board Member

Low Income Sector Designee

Northern Region Advisory Council Member

LaVita Holmes, Board Member

Low Income Sector Designee

Southern Region Advisory Council Member

Antonia Jackson, Board Member

Low Income Sector Designee

Head Start Policy Council Member

Glenda Jones, Board Member

Private Sector Designee

Winter Haven Neighborhood Service Ctr. - Exec. Dir.

Chester McNorton, Board Member

Low Income Sector Designee

ATEC Advisory Council Member

Vernon McQueen, Board Member

Private Sector Designee

Progress Energy Florida - Senior DMS Specialist

Lester Roberts, Board Member

Public Sector Designee for

Deputy Mayor Brenda Gray – City of Avon Park

Annie Robinson, Board Member

Low Income Sector Designee

Southern Region Advisory Council Member

Janet B. Taylor, Board Member

Public Sector

Hendry County BoCC Commissioner

Ruby Willix, Board Member

Low Income Sector Designee

Central Region Advisory Council Member

Jonathan Thiele, Esq. - Board Counsel

Grace Miller - Board Member Emeritus



Awards and Recognition

Every year the Agricultural and Labor Program, Inc., extends recognition and appreciation to its Governance Leadership, Shared Governance Leadership, Community Organizations, Corporate Partners and Agency Leadership who contributed to the advancement of ALPI's vision and mission to help socially and economically disadvantaged families, children and farmworkers help themselves and each other. Thus, it is with great pride that we present the following 2015 Awards and Recognitions.

Board of Directors Chairperson Award

WILLIAM HOLT

Board Chairperson's Award

VERNON MCQUEEN

Robert J. Bryant, Jr. Award

DOROTHY CURRY

Housing Board Chairperson's Award

PHILLIP HOWARD

Head Start/Early Head Start Policy Council Chairperson Award

RUSSELL BALASCO

Community Services Award

2ND STREET TREE CLUB

ELDER WALTER BARRON

DR. VELMA HAYES WILLIAMS

ROBERT CALVIN SAFFOLD

Corporate Support Award

CHILDREN'S SERVICES COUNCIL OF ST. LUCIE COUNTY

Certificate of Appreciation

JOSEPHINE HOWARD

SUSAN L. TAYLOR

CEO Recognition Award

DELORIS JOHNSON

ACCOMPLISHMENTS & OPPORTUNITIES

The ALPI Board of Directors reviews its Strategic Plan annually to: 1. Provide a “road map” for the future direction of ALPI and 2. To assist in the development of strategies to accomplish the plan’s identified goals (create additional educational experiences and opportunities for staff; devise a plan of upward mobility within the agency; partnerships with other entities for more efficient service delivery; target new areas of expansion; and enhance program development for and service delivery to children and their families). The ALPI management and staff, in conjunction with Board of Directors, continue to plan and implement activities that allow for the organization to progress towards accomplishing each goal. It is with great pride that we present this *snapshot* of the Agricultural and Labor Program, Incorporated’s (ALPI) “Second Year Performance Summary” for its Five-Year Strategic Plan (2013-2018) for the period of July 1, 2014 through June 30, 2015.

GOVERNANCE & LEADERSHIP DEVELOPMENT

Exemplary Governance and Leadership Development is driven by a strong and engaged Board of Directors. Dedication and numerous volunteer hours are the key to the realization of positive outcomes to ensure ongoing compliance with programmatic and regulatory mandates in a timely manner. Ongoing 2014-2015 Board Development and Management action items reviewed via its committee structure and the Board’s approval process included the following positive outcomes.

BUDGET & FINANCE COMMITTEE

- Approved funding opportunities to secure new and maintain 100% of existing funding agreements.
- Fully funded 225 full-time employment opportunities.
- Fully Funded 2014-2015 Operating Budgets.
- Reviewed ALPI’s Florida Blue Health Plan compliance with the Affordable Health Care Act ACA Requirements to maintain an affordable health care benefit plan for all ALPI employees.
- Capital Improvement budget to enhance Health and Safety in all agency owned facilities.
- Approval of CSBG Expansion Grant for Hendry and Glades counties.
- Approval to utilize agency and unrestricted funding to maintain 100% Head Start and Early Head Start enrollment during the mandated sequestration reduction in funding.
- Secured approval of agency’s 2015 Indirect Cost Proposal and approved Indirect Cost Rate.

ALPI COMPLETED IT’S ANNUAL AUDIT WITH NO FINDINGS, RETAINING IT’S “LOW RISK” AUDITEE DESIGNATION.

BY-LAWS COMMITTEE

- Realignment of representatives in each of the tripartite sectors.
- Improvement of Head Start Policy Council attendance.
- Increased Board membership to broaden local client and public official participation.

ACCOMPLISHMENTS & OPPORTUNITIES

GOVERNANCE AFFAIRS COMMITTEE

- Guidelines were established for Board, Advisory Councils, Policy Councils and volunteers to use when assisting with Voter Registration.
- Political Forums held at Regional Advisory Council levels.

MEMBERSHIP COMMITTEE

- Board membership expansion into Hendry and Glades counties.
- Shared Governance Orientation session with 100% Program, Head Start/Early Head Start Policy and Regional Council membership representation.



PROGRAM PLANNING COMMITTEE

The Committee reviewed and recommended Board approval of the following action items, including authorizing the Chief Executive Officer to execute, on behalf of the Board of Directors, any agreements or documents that may be required:

- Ratify and/or approve of the 2015-2016 School Readiness Provider contracts for George W. Truitt and Frostproof Childcare Center.
- Ratify the CSBG Modification Agreement.
- Ratify acceptance of the increase in authorized expenditures for LIHEAP funding.
- Approve Florida Non-Profit Housing Continuation Funding for 2015-2016.
- Approve 2015-2016 Housing Counseling Grant.
- Approve submittal of the 2015-2016 Community Services Block Grant contract to the Department of Economic Opportunity.

SPECIAL EVENTS COMMITTEE

Reviewed and recommended Board approval of the following action items:

- Advisory Council's Community Services Awards nominations and deadline review of annual meeting program procedures.
- Identify nominations for Volunteer Services Awards (Robert Bryant Jr. Award, FACA, FHSA, SEACAA, Region IV HS, NHSA). Review process for contacting individuals/businesses receiving corporate/community awards.
- Move that the Board approve phase two of the Wall of Fame Plan focusing on the birth of The Agricultural and Labor Program, Inc. "Moving toward excellence in providing a total system approach ensuring access to services for the population we pledge to serve." Time line: November 2015 Board Retreat.

ACCOMPLISHMENTS & OPPORTUNITIES

ADVOCACY & COMMUNITY ENGAGEMENT PARTNERSHIPS

Meaningful partnerships enhance community engagement in projects, increase community awareness of the issues being addressed and establish a framework for the continued support of services that support community advocacy efforts, including the creation and expansion of programs and services, developing partnerships, and changing public policies, laws, and practices to improve the lives of families seeking a hand up.

HEAD START/EHS POLICY COUNCIL: The Policy Council composition consists of 78% of parents whose children are currently enrolled in the Early Head Start Program and 22% of Community Social Services agencies.

ADVISORY COUNCILS: Advisory Councils to the organization serve important functions, they are vital to the success of the organization. Councils: (1) are good will ambassadors (2) are knowledgeable about the missions of the organization (3) support the organization, and (4) are vital communication links to the communities that the organization serve.

OTHER COMMUNITY PARTNERS & ADVOCACY GROUPS: Other Advocacy and Community Engagement Partnerships are important components of ALPI community partnership efforts.

Northern Regional Advisory Council

The Northern Region Advisory Council Annual Meeting was held on October 24, 2015 in Sanford, Florida. The main focus of the Northern Region Advisory Council during this operational year was to complete the process for presenting the Grace Miller Scholarship Award and certification of the corporate membership list. The first scholarship award will be presented at the Northern Region Annual Meeting in October 2016.

Eastern Regional Advisory Council

The Eastern Region Advisory Council hosted its Annual Membership and Arie Lou Perkins Scholarship Luncheon on October 17, 2015 in Ft. Pierce, Florida. Accomplishments and activities: raised \$1,500.00 for three Arie Lou Perkins scholarships, three scholarships awarded in St. Lucie County, and ERAC council members assisted with LIHEAP Energy Fairs in St. Lucie and Martin counties during the months of August and September.



Central Regional Advisory Council

The Annual Corporate Membership Meeting was held on Saturday, October 5, 2015 in Frostproof, Florida. Council Members participated in the ongoing 2014-2015 Voters' Registration activities and "LIHEAP Energy Fair", serving appropriately 500 families in Lakeland and the surrounding communities. The following committees were established to address the following: the Arabell Wiggins Scholarship (Scholarship Committee), the Annual Corporate Membership Meeting (Special Events/Community Relations Committee) and the upcoming 2016 Presidential Election (Government Affairs Committee).

Southern Regional Advisory Council

The SRAC Annual Corporate Membership Meeting was held in Frostproof, Florida on October 19, 2015. The Southern Regional Advisory Council is proud to announce the *Seigler, Sims & Wade Scholarship* for eligible high school graduates. The goal of the Council is to present its first scholarship in 2016. Additionally, Summer jobs were coordinated with the CSBG Program for two youth to assist with the Summer Food Service Program.



ACCOMPLISHMENTS & OPPORTUNITIES

HEAD START POLICY COUNCIL

During the 2014-2015 program year the Parent Committees and Policy Council were established during the months of September and October 2014 at all the directly operated and contracted centers. The Parent Committees consisted of parents of children enrolled in the Head Start and Early Head Start Program. The Policy Council membership consisted of 78% of parents whose children were enrolled in the program and 22% were Community Representatives. The Policy Council was provided with a Shared Governance Orientation/Training on October 1-3, 2014 in which training of the roles and responsibilities of ALPI's Board of Directors and the Policy Council was the main focus. The Policy Council, in their decision-making role, was able to approve the following: Agency Personnel Policies and Procedures, Agency Financial Management Policies and Procedures, and Program Management Plan/Operational Policies and Procedures.

A TOTAL OF 964 CHILDREN & THEIR FAMILIES WERE SERVED DURING THE 2014-2015 PROGRAM YEAR.



THE ALPI TECHNICAL EDUCATION CENTER (ATEC)

The ALPI Technical Education Center (ATEC) continues to be licensed by the Florida Commission for Independent Education (CIE) for the provision of occupational training in Volusia County.

- ATEC completed a CNA Prep class and contracted two RNs working as instructors for ATEC CNA and HHA courses.
- Program Director met with CareerSource of Flagler and Volusia to discuss a possible partnership whereby ATEC would advise potential students of available programs at CareerSource.

AGRICULTURAL AND LABOR HOUSING DEVELOPMENT CORPORATION (ALHDC)

The Agricultural and Labor Housing Development Corporation (ALHDC) was incorporated in 1993 as a Florida Non-Profit Corporation. It was initially established by the Agricultural and Labor Program, Incorporated (ALPI) for the purpose of building and operating a 57-unit Farmworker Apartment Complex in Auburndale. The primary mission of the ALHDC is the provision of affordable rental housing to farmworkers in the Auburndale area of Polk County.

ALHDC COMPLETED
IT'S ANNUAL AUDIT
WITH NO FINDINGS,
RETAINING IT'S
"LOW RISK"
AUDITEE
DESIGNATION.

At the New Horizon Community Center, through the Community Services Block Grant (CSBG) program operated by ALPI, the local community is able to obtain various services. This includes: emergency assistance, family self-sufficiency services, job placement and assistance, assistance with electric payment and computer access to the internet. ALPI maintains two case managers at the complex for the operation of a Family Self-Sufficiency Program (FSSP), which is funded by the CSBG for the purpose of working with low income families in meeting their immediate needs and providing training and educational opportunities to assist in upward mobility.



ACCOMPLISHMENTS & OPPORTUNITIES

CHILD CARE FOOD and NUTRITION SERVICES

A total of **358,441** meals were provided to pre-school and school age children via the Child Care Food and Nutrition Program.

HUD HOUSING COUNSELING

Housing counseling or foreclosure mitigation was provided to 34 families in Polk and Osceola counties.

LOW INCOME HOME ENERGY ASSISTANCE PROGRAM

LIHEAP services, in partnership with 13 non-profit organizations, provided assistance to a total of **8,322** clients (i.e. Collier, Glades, Hendry, Highlands, Martin, Polk and St. Lucie counties).



PROGRAMS & FAMILY SUPPORT SERVICES OVERVIEW

ALPI Programs and Family Support Services offered during 2014-2015 services once again realized very positive outcomes, including the following:

EMPLOYMENT OPPORTUNITIES

Full-time and part-time employment opportunities were maintained to 225 employees in Highlands, Polk, St. Lucie, and Volusia counties.

MINIMUM WAGE
INCREASED
TO \$10.10

CSBG – COMMUNITY SERVICES BLOCK GRANT

- CSBG enrolled 210 families into the family self-sufficiency program with 67 clients obtaining jobs; 20 receiving an increase in income and/or benefits; 61 completing post-secondary education; and, 53 receiving skills/competencies and/or higher education or training.
- Additionally, 9 youth were provided with summer job opportunities, and 11 adults were provided with work experience of which 7 became gainfully employed.
- CSBG partnered with 8 non-profit organizations to provide vocational training services to 39 individuals and employment assistance to 49 in 3 counties (Polk, Highlands, and Hendry).

FARMWORKERS VOCATIONAL TRAINING and EMERGENCY ASSISTANCE

Vocational training was provided to 11 farmworkers in Volusia County and Emergency Assistance to 338 farmworkers in 21 counties.

ACCOMPLISHMENTS & OPPORTUNITIES

HEAD START/EARLY HEAD START and SCHOOL READINESS OPPORTUNITIES

The following is a summary of the program's approach to service delivery and accomplished goals and objectives as mandated by the federal, state regulations and requirements. The report includes data obtained from the Program Information Reports, Program Database Systems, and other formal and informal reports.

EARLY CHILDHOOD DEVELOPMENT AND HEALTH SERVICES

Education and Early Childhood Development - Child Outcomes: Based on the Agency's official recordkeeping system (Galileo), it was revealed that children have made progress on all domains based on the Head Start Child Development and Early Learning Framework. Classroom activities were enhanced to track progress based on the new revised domains. Teaching staff continued to monitor and evaluate the progress on all eligible kindergarten children.

The Head Start Program generated three reports: Baseline, Mid-year, and the Final Report in the areas of: Approaches to Learning, Creative Arts, Early Math, English Language Acquisition, Language, Literacy, Logic and Reasoning, Nature and Science, Physical Development and Health, Social and Emotional Development, and Social Studies Knowledge and Skills.

Head Start: The Head Start Final Child Outcomes Report for the 2014-2015 school year showed the percentage of children that had progressed/advanced in each domain area as follows:

PRE-SCHOOL	BEGINNING	INTERMEDIATE	ADVANCED
Approaches to Learning	6%	14%	80%
Creative Arts	10%	26%	64%
English Language Acquisition	34%	23%	43%
Early Math	21%	31%	48%
Language	11%	23%	66%
Literacy	18%	25%	57%
Logic and Reasoning	14%	21%	64%
Nature and Science	20%	37%	43%
Physical Development & Health	7%	25%	68%
Social Studies	17%	34%	49%
Social and Emotional Development	12%	24%	64%

ACCOMPLISHMENTS & OPPORTUNITIES

Early Head Start: The Early Head Start Final Child Outcomes Report for the 2014-2015 school year showed the percentage of children that had progressed/advanced in each domain area as follows:

2-3 YEARS OLD	BEGINNING	INTERMEDIATE	ADVANCED
Approaches to Learning	15%	21%	64%
Cognitive Development and General Knowledge	18%	29%	53%
Language, Communication, Reading, and Writing	22%	30%	48%
Physical Development and Health	11%	15%	74%
Social and Emotional Development	17%	20%	63%
18-24 MONTHS OLD	BEGINNING	INTERMEDIATE	ADVANCED
Approaches to Learning	35%	28%	37%
Cognitive Development and General Knowledge	28%	31%	41%
Language, Communication, Reading, and Writing	32%	32%	36%
Physical Development and Health	19%	10%	71%
Social and Emotional Development	31%	25%	44%
08-18 MONTHS OLD	BEGINNING	INTERMEDIATE	ADVANCED
Approaches to Learning	5%	26%	69%
Cognitive Development and General Knowledge	15%	34%	51%
Language, Communication, Reading, and Writing	22%	20%	58%
Physical Development and Health	2%	21%	77%
Social and Emotional Development	10%	27%	63%
00-08 MONTHS OLD	BEGINNING	INTERMEDIATE	ADVANCED
Approaches to Learning	40%	25%	35%
Cognitive Development and General Knowledge	50%	17%	33%
Language, Communication, Reading, and Writing	40%	35%	25%
Physical Development and Health	12%	35%	53%
Social and Emotional Development	43%	38%	19%

Voluntary Prekindergarten Services: ALPI provided VPK services to approximately 404 children at directly operated Head Start centers in St. Lucie County. The VPK program provides an extended day for preschoolers that are 4 years old to promote emergent literacy. The program offers an additional three hours of literacy directed activities, which

ACCOMPLISHMENTS & OPPORTUNITIES

are hands on and supports language and literacy domains. Children were assessed utilizing the VPK assessment tool. The VPK Assessment Final Report for the 2014-2015 school year showed the percentage of children that had progressed/advanced in each of the measured areas:

CHILD DEVELOPMENT AND FAMILY SERVICES CENTER	BELOW EXPECTATIONS	MEETING EXPECTATIONS	EXCEEDING EXPECTATIONS
Print Knowledge	4%	19%	77%
Phonological Awareness	5%	25%	70%
Oral Language/Vocabulary	3%	36%	61%
Mathematics	7%	38%	55%
FRANCINA DUVAL HEAD START CENTER	BELOW EXPECTATIONS	MEETING EXPECTATIONS	EXCEEDING EXPECTATIONS
Print Knowledge	7%	14%	79%
Phonological Awareness	10%	28%	62%
Oral Language/Vocabulary	14%	41%	45%
Mathematics	10%	31%	59%
GARDEN TERRACE HEAD START CENTER	BELOW EXPECTATIONS	MEETING EXPECTATIONS	EXCEEDING EXPECTATIONS
Print Knowledge	12%	15%	73%
Phonological Awareness	12%	23%	65%
Oral Language/Vocabulary	6%	19%	75%
Mathematics	12%	31%	58%
LINCOLN PARK HEAD START CENTER	BELOW EXPECTATIONS	MEETING EXPECTATIONS	EXCEEDING EXPECTATIONS
Print Knowledge	13%	16%	71%
Phonological Awareness	6%	0%	94%
Oral Language/Vocabulary	10%	0%	90%
Mathematics	13%	13%	74%
GEORGE W. TRUITT FAMILY SERVICES CENTER	BELOW EXPECTATIONS	MEETING EXPECTATIONS	EXCEEDING EXPECTATIONS
Print Knowledge	8%	12%	81%
Phonological Awareness	15%	8%	77%
Oral Language/Vocabulary	8%	35%	58%
Mathematics	8%	38%	54%
QUEEN TOWNSEND HEAD START CENTER II	BELOW EXPECTATIONS	MEETING EXPECTATIONS	EXCEEDING EXPECTATIONS
Print Knowledge	7%	15%	78%
Phonological Awareness	14%	22%	64%
Oral Language/Vocabulary	8%	35%	57%
Mathematics	12%	33%	55%

ACCOMPLISHMENTS & OPPORTUNITIES

Six (6) directly operated centers in St. Lucie County provide Voluntary Pre-Kindergarten services. The following information represents the 2014-2015 Preliminary Voluntary Prekindergarten Provider Kindergarten Readiness Rate Report:

CENTER	READINESS RATE
QUEEN TOWNSEND HEAD START CENTER II	91
FRANCINA DUVAL HEAD START CENTER	92
GARDEN TERRACE HEAD START CENTER	93
GEORGE W. TRUITT FAMILY SERVICES CENTER	100
CHILD DEVELOPMENT AND FAMILY SERVICES CENTER	88
LINCOLN PARK HEAD START CENTER	95

CLASS Observation Results: The final CLASS observations for the 2014-2015 school year were conducted in April-May 2015 to assess the classroom teaching quality focusing on three domains to include: emotional support, classroom organization, and instructional support. The three domains include multiple dimensions of classroom quality such as: positive climate, negative climate, teacher sensitivity, regard for student perspective, behavior management, productivity, instructional learning format, concept development, quality of feedback, and language modeling.

All thirty-nine (39) preschool classrooms were observed. Data collected for the 2014-2015 school year revealed that ALPI continues to make progress.

CLASS FINAL SCORES FOR 2014-2015 SCHOOL YEAR		
EMOTIONAL SUPPORT	CLASSROOM ORGANIZATION	INSTRUCTIONAL SUPPORT
6.2158	5.8512	4.6137

Early Childhood Health Services: “Building Healthy Head Start Communities” continues to be the focus for Health Services in the 2014-2015 school year. We continue to emphasize the importance of community and building long lasting partnerships as we promote family and program advocacy for good health. During the 2014-2015 school year, in collaboration with community partnerships and parents, we were able to provide quality services to 964 (100%) actual children enrolled in our Head Start/Early Head Start Program. Our records indicates the following services:

Medical

- 964 of enrolled children received a physical exam and had up-to-date immunizations.
- 150 children were diagnosed with asthma. Health alerts, and parents/teachers information packets were provided.
- 89 children were diagnosed with anemia. Health information was provided and referrals were completed.
- 81 children were overweight/obese and received services/counseling through WIC or program’s nutritionist.

ACCOMPLISHMENTS & OPPORTUNITIES

Dental

- 913 of the children received dental exams.
- 185 of the 913 children were diagnosed as needing dental treatment.
- 176 of the 185 children received dental treatment.

Nutrition Services: Families continued to take advantage of the WIC Program. The program continues to promote the Health Services Advisory Committee, in which the WIC Program personnel participate. The WIC Program provided families with hemoglobin screenings, nutritional supplements, and nutritional counseling. The Nutrition Consultant provided individual counseling to families of overweight and underweight children, children with low hemoglobin readings that do not qualify for WIC services, and children with special diets or food allergies.

Mental Health/Disability: Mental Health classroom observations were conducted to insure that the school environment is conducive to learning. In collaboration with community partners and a mental health consultant, we provided referrals for assessments and/or evaluations. The program served **99** children that were diagnosed as receiving special education and/or early intervention services through the LEA or Early Steps-Part C Agency.

FAMILY AND COMMUNITY PARTNERSHIPS

During the 2014-2015 school year, 888 families participated in our Head Start/Early Head Start Program. The 888 families received a variety of services, including, but not limited to:

• Emergency/Crisis Intervention	159
• Housing Assistance	118
• Mental Health	62
• English as a Second Language	171
• Adult Education (GED/College)	222
• Job Training	212
• Substance Abuse Prevention	111
• Substance Abuse Treatment	11
• Child Abuse and Neglect Services	888
• Domestic Violence Services	8
• Child Support Assistance	8
• Health Education	888
• Assistance to Families of Incarcerated Individuals	30
• Parent Education	888
• Relationship/Marriage Education	2



ACCOMPLISHMENTS & OPPORTUNITIES

Homelessness Services: The number of families experiencing homelessness that were served during the 2014-2015 enrollment year: 9

Parent Involvement: ALPI Head Start/Early Head Start has a community identity as a family-focused program with operating principles of parent involvement and empowerment. Parent involvement continues to be the mainstay of the program. The involvement of parents continues to be vital for the center-based operation and the education of their children. Parents made themselves available to serve on committees, attend meetings, volunteer in the classrooms, and assist with community events. The program supports families by ensuring that parents have the knowledge, skills, and the resources they need to become self-sufficient and by sustaining partnerships with parents and supporting them as primary educators, nurturers, and advocates for their children.

The Nurturing Fatherhood Program continued to focus its energy toward empowering, educating and uplifting fathers and other male figures in the lives of children. Approximately **155** fathers/father figures participated during the 2014-2015 school year.

Transportation: During the 2014-2015 program year the transportation unit provided services to over 186 children. All buses were on a preventive maintenance schedule. The transportation staff participated in training activities throughout the program year.

ERSEA: Total funded enrollment of 831 (100%) children were enrolled and maintained throughout the program year in both counties (St. Lucie and Polk). Monthly attendance reports were completed and submitted to the funders. A total of 964 children and their families were served during the 2014-2015 program year. This statistical data was obtained from the Program Information Reports (PIR) submitted to the Office of Head Start for the following programs: Head Start/Early Head Start. The following breakdown represents children served by the program:

- Head Start 763
- Early Head Start 201

PROGRAM DESIGN AND MANAGEMENT

Program Governance: Successfully organized and maintained the 2014-2015 Policy Council, Policy Committee and Parent Committees, having heavily invested in both. The Policy Council and Policy Committee participated in various functions with the Board of Directors, including: Board Retreat, Board Orientation, Agency Corporation Annual Meeting, Agency Annual Picnic, and Program Annual Self- Assessment.



ACCOMPLISHMENTS & OPPORTUNITIES

During the 2014-2015 school year, the Board of Directors and Policy Council approved: refunding applications, new hires/ terminations, management work plans, agency personnel/fiscal management policies and procedures, internal dispute resolution and community complaint policies and procedures.

Self-Assessment: The 2015 Agricultural and Labor Program, Inc. Annul Self-Assessment was conducted over a period of four (4) months beginning in November 2014 and ending in February 2015.

ALPI's goals and objectives for Head Start and Early Head Start were established during annual program planning taking into consideration the requirements outlined in the Head Start and Early Head Start Performance Standards, the Head Start Reauthorization Act as amended December 12, 2007, School Readiness Head Start requirements, CLASS, Information Memorandums, and state and local requirements.

The results of monitoring activity was reviewed, analyzed and presented below as a summary report of findings and/or weaknesses. The report includes identified program strengths and a listing of confirmed weaknesses of performance listed under "key indicators" used by the Office of Head Start Monitoring Teams to measure program performance.

Department of Health and Human Services: ALPI received funding from the Department of Health and Human Services to provide comprehensive child development Head Start and Early Head Start services to 831 children and their families. The total funding for the 2014-2015 school year was \$7,284,907.00.

Early Learning Coalition: ALPI received funding from the St. Lucie County Early Learning Coalition to provide Voluntary Pre-Kindergarten Services to kindergarten eligible children. The total funding for the 2014-2015 school year was \$886,828.47.

Child Care Food Program: ALPI received funding from the Child Care Food Program to provide free meals i.e., breakfast, lunch and snacks, to children enrolled in the Head Start and Early Head Start programs in St. Lucie and Polk County for the 2014-2015 school year, July 1, 2014 through June 30, 2015. Funding amount was \$677,153.86. The total meals served including breakfast, lunch and snack is 358,447.00.



ACCOMPLISHMENTS & OPPORTUNITIES

Child Care: ALPI received funding from the Early Learning Coalitions to serve children and their families in the School Readiness Program thru the subsidized state funding in St. Lucie and Polk County. The total funding received from the Coalitions and client's private pay was \$34,241.56.

Professional Development and Skills Enhancement: The program continues to promote individual professional development. At the end of each year, validation of trainings and/or formal education is conducted by obtaining in-service training hours, certificates and certifications. We tracked trainings, certificates and certifications in PROMIS. The system validated that staff members participated in the following training opportunities:

- Child Abuse and Neglect
- Teaching Strategies Gold
- Refresher: CLASS Overview
- Splash Into Pre-K Curriculum
- Health and Safety Practice – Operational Policies and Procedures
- Health and Safety: Medication Administration and Long Term & Short Term Exclusion,
- Supervision, Release of Children, Etc.
- Implementation of Inclusion Strategies for Children with Disabilities
- Basic Guidance and Discipline
- FL Early Learning and Developmental Standards: Birth to Five Career Level
- Guide to Record Keeping
- Universal Precautions
- Goal Setting Process
- Family Partnerships Agreement
- Serving Safe Food
- CCFP Standards Overview
- CLASS Reliable Certification Pre-School
- CLASS Reliable Certification for Toddlers
- CPR and First Aid Certification
- Reducing the Risk of Sudden Infant Death Syndrome (SIDS)
- ERSEA Training Final Rule
- Facility Maintenance and Safety
- Transportation Safety

Facilities, Materials, Equipment: Successfully complied with federal and state reviews and inspections for buildings and school buses. Throughout the year the facilities were maintained with a clean and quality environment, materials, supplies, and equipment for all the seven (7) operated centers. ALPI successfully maintained the seven (7) directly operated centers' license renewals in accordance with state and local requirements. Effectively reconciled the program inventory and worked closely with the finance department to ensure reconciliation with the agency fixed asset inventory.



ACCOMPLISHMENTS & OPPORTUNITIES

FAMILY SELF-SUFFICIENCY SUCCESS STORIES



Yaritza Davila

On September 24, 2014, Yaritza Davila walked into an Agricultural and Labor Program, Inc. (ALPI)

office in Avon Park, Florida saying she was homeless and had no idea what to do. She was living out of her car and worried that her son would be taken away from her. Upon meeting Charles Baker, ALPI Case Manager, Ms. Davila stated she had no income and she and her nine-year-old son Yaruan had been "house surfing", having sometimes to sleep in her car. When asked how that happened, Ms. Davila stated she recently moved to Florida with her boyfriend, but circumstances made her feel threatened and she left him knowing she had nowhere else to go. Although she had applied for emergency housing, it would be a couple of weeks before she could move in, but with assistance from her case worker, she was able to move immediately into a domestic violence center. A month later, Ms. Davila moved out of the emergency shelter and into emergency transitional housing for the homeless, a program run by the Avon Park Housing Authority. Over the course of a few weeks, Baker, Davila and the Avon Park Housing Authority case manager, Toni Salvaggio, all spoke several times about coordinating a case plan and helping Davila go back to school now that her housing was stable.

Almost a year ago, Davila was homeless and scared. Today, life is dramatically different for her and

her son, mostly as a result of Davila's personal efforts, but also thanks to agencies partnering together to better deliver comprehensive, life changing services. Perhaps the best part of this story isn't about Yaritza, but her son Yaruan. His mother said Yaruan is doing great in school and her relationship with him is back to the way it used to be: filled with love and happiness.

"Domestic violence affected me. Knowing my son deserved peace and stability gave me strength, but success was not in my thoughts," Davila said. "With help from Charles, who believed in me and worked with me through these barriers, I've learned that you can keep going, long after you think you can't. Never give up. There is no such thing as an ending, just a new beginning. Nothing is impossible. I want to thank God above all, but I would also like to give a special thanks to the ALPI program for this opportunity." Ms. Davila not only obtained permanent, full-time employment, she also helped her community sustain a small business that continues to provide critical services to those most in need. This is what Community Action is all about, "Helping People ... Changing Lives."

ACCOMPLISHMENTS & OPPORTUNITIES

Charmeythia Streeter

Ms. Charmeythia Streeter, a single mother with three children and no income, enrolled in the ALPI Family Self-Sufficiency Program in May of 2013. Ms. Streeter met Case Manager Sheila Armstead at an Open House sponsored by Ridge Career Center. She discussed a desire to enroll in the Cosmetology Program offered through Ridge Career Center.

Along with assistance from ALPI and her case manager, Ms. Streeter successfully enrolled into the Cosmetology Program at Ridge Career

Center. Through assistance from ALPI's FSSP, she was able to reach her goals and rise to the top of her class.

Ms. Streeter worked diligently through the ALPI Family Self-Sufficiency Program and graduated from the Cosmetology Program in June of 2014, after which she went on to obtain her state license.

ALPI is proud to announce that Ms. Streeter is currently working as a hairstylist at the J.C. Penney Salon located in the Posner Park Shopping Center.



CHILDREN & YOUTH DEVELOPMENT SUCCESS STORIES



Parent-Child Math Engagement Collaboration

ALPI Head Start partnered with the Parent Academy of SLC, Inc. to promote school readiness via a special Math Workshop which focused on the preparation of children for kindergarten. Both children and parents participated in this very successful collaboration. Participants were shown new ways to foster a deep understanding of math concepts. Parents also received free materials that can be used at home to support further math understanding. Parent Academy is a not-for-profit organization created to strengthen the families of St. Lucie County by giving parents and caregivers access to resources, information, and support they might not otherwise know about.

FUNDING & COMMUNITY ECONOMIC DEVELOPMENT OPPORTUNITIES



THE ALPI 2015
SUMMER FOOD
SERVICE
PROGRAM
SERVED 3,313
MEALS.

ALPI'S SUMMER ENRICHMENT PROGRAM: Camp Ready 2014

Camp Ready 2014 was hosted, for the fourth year, at the Frostproof Child Development Center in Frostproof, Florida. This program was a collaborative effort between ALPI and the Learning Resource Center. The objective of the collaboration was to work together to provide an opportunity for preschoolers entering kindergarten to have an extended school year of activities geared toward preparing them for kindergarten. The goal of the program was to assist children to enter kindergarten “ready to learn”, while enhancing skills with remedial activities to successfully transition to kindergarten. Parent engagement was also fostered in the program through volunteering in the classroom, weekly family take home activities, and child outcome reports at the start and end of the program.

FUNDING & COMMUNITY ECONOMIC DEVELOPMENT OPPORTUNITIES

The ALPI's 2014-2015 agency wide budget was \$16,365,805, of which 94% was earmarked to address the needs of children and families facing social and economic challenges due unemployment, increased utility costs, mortgage foreclosure & limited food, shelter and affordable early child care. Additionally, the ALPI has:

- Successfully received new funding from the Emergency Home Energy Assistance Program (EHEAP).
- Diversified its funding through the Voluntary Pre-K program, local donations, board fundraisings, and, E-Rate Technological Funds.
- Secured increased funding to expand CSBG services to Glades County via CAA.

JOBS & PROFESSIONAL DEVELOPMENT OPPORTUNITIES

- Facilitated Cost of Living (COLA) adjustments for all staff.
- Provided Annual Professional Development Incentive Payments for all eligible employees.
- 100% of ALPI employees completed a minimum of 15 hours of professional development training through June 30, 2015.

FUNDING & COMMUNITY ECONOMIC DEVELOPMENT OPPORTUNITIES

COMMUNITY RESOURCE DEVELOPMENT OPPORTUNITIES

- Maintained established partnerships with over 300 different agencies including: United Way, local school boards, local community/state colleges, Healthy Start, housing authorities, Early Learning Coalitions, and others.
- ALPI's LIHEAP and CSBG Programs subcontracted with over 10 different community and faith-based organizations

LIHEAP
PARTNERED
WITH **41**
DIFFERENT
AGENCIES.

ADMINISTRATION & PROGRAM OPPORTUNITIES

Ongoing administration and management action items reviewed via the Board's committee structure approval process realized positive outcomes that include the following:

- Secured unrestricted funds via E-Rate and other donations to enhance agency funded activities and Head Start/Early Head Start Center Health and Safety renovation activities.
- Completed a review of ALPI's Florida Blue Health Plan for compliance with the Affordable Health Care Act ACA requirements and to insure an affordable health care benefit plan for all ALPI employees.
- Facilitated ongoing Board training opportunities via ALPI Annual Board Management Planning Retreat, Board and Policy Shared Governance Orientation, SEACAA Annual Training Conference, NCAF Annual Energy & Innovation Training Conference, CAPLAW Annual Training Conference, NCAF Annual Training Conference, One Goal Summer Conference, FACA Annual Training Conference, Florida Head Start Association Annual Training Conference, and Region IV Head Start Association Annual Training Conference.
- Secured ongoing IT support to maintain an efficient and effective computer network system, including a Board Portal Component installed on the agency's web site.
- Conducted and facilitated ongoing management and support staff meetings, training and technical assistance opportunities.
- Disseminated research data to explore programs and services expansion opportunities in Polk, St. Lucie and Glades counties.
- Maintained safe and positive working environments, a positive cash flow and ongoing agency support funding for all programs and services.



CONTINUED TO
PROVIDE EMPLOYMENT
TO MORE THAN 225 INDIVIDUALS.

- Developed a Virtual Tour DVD and distributed to each Board member to enhance their knowledge base regarding the agency's facilities structure, location and service delivery type. The virtual tour was designed to share with the Board of Directors, clients, community partners and supporters.

SPECIAL THANKS & RECOGNITION

Regional Advisory Councils

Central

Louvenia Crumrity
Earnestine Davis
John Doles
Clora Dubose
Patricia Gamble

Clarence Grier
Josephine Howard
Hollis Jackson
Lillie Jackson
Glenda Jones

Annie Larkins
Johnnie McNair
Helen Rowe
Elizabeth Scaife
Margaret Simon

Dorothy Spencer
Lydia Thomas
Ruby Willix

Eastern

Betty Bradwell
Bobby Byrd
Frances Cooper
Marjorie Gaskin

Constance Griffin
William Holt
Angela Jules
Fannie Moore

Margaret Porter
Beverly Richardson
Katherine Sims
Gena Spivey

Tiffany Wilder
Debra Williams

Northern

Constance Anderson
Dorothy Curry
Sheila Dixon

Yvonne Grey
Charles Harris, Jr.
Marva Hawkins

Grace Miller
Evelyn Seabrook
Donald Tillman

Southern

John Ash
Katie Clarke
Noemi Cruz

Barbara Grace
Annette Jones
Emma Malcolm

Bernice Lopez
Pamela Moxley
Lester Roberts

Annie Robinson
Beverly Sloan
Ethelrine Watts
Terry Wellington

Head Start/Early Head Start Policy Council

Russell Balasco
Tawana Barnes
Cotina Best
Raquel Bizzell
Raynard Cromes
Edward Pierre Louis-Delva
Patricia Gamble
Knosha Burks-Hair

Jaquis Hall
Antonia Jackson
Sandra Denise Larkins
Tom Peer
Daniel Reeder
Miavonti Shaw
Denise Sirmons
Nadia Stewart

Vivian Tindall
Ervin Valcin
Alicia Villegas
Quenithia Wright

ALTERNATES
Asante Bogle
Christina Bradwell

Pamela Burson
Michael Daniels, Sr.
Felicia Sweeting-Harris
Neisha Hill
Shaqnita Jackson
Whitney Marie King
Marie Laventure
Samantha Lindsay

Brandi Rogers
Recartha Smith
Octavia Spears
Demetrice Strapp
Karla Wood

ATEC Advisory Committee

Nereida Jackson
Patty McCollister

Chester McNorton
Leona Nater

Jonell Persinger

ALPI Housing Development Board

Nathaniel Birdsong
Patricia Gamble

Josephine Howard
Phillip Howard

Glenda Jones
Leola Lewis

Johnnie McNair
Jacqueline Rentz
Elizabeth Scaife

Special thanks to the ALPI Board of Directors for your tireless fundraising and personal financial contributions throughout this past year, to ALPI staff for your continued commitment and dedication to the mission of the Agricultural and Labor Program, Inc., and to the following for your generous contributions and *Circle of Support* participation.

Chester Family
ALPI Executive
Department Staff
Marva Y. Hawkins

Florida Non-Profit
Housing
Johnson Family
Glenda W. Jones

GRAY Building, LLC
Brenda Gray, Owner
Christine Samuel
Evelyn Seabrook

Mrs. George Truitt
Valarie J. Walker
Freddie and
Elizabeth Young

ALPI HEAD START/EARLY HEAD START

CENTER LOCATIONS

POLK COUNTY

Frostproof Child Development Center
701 Hopson Road
Frostproof, FL 33843

ALPI Child Development and
Family Services Center
198 NW Marion Avenue
Port St. Lucie, FL 34983

ST. LUCIE COUNTY

Lincoln Park Head Start Center
1400 Avenue M
Fort Pierce, FL 34950

Francina Duval Head Start Center
1035 South 27th Circle
Fort Pierce, FL 34950

G. W. Truitt Family Services Center
1814 North 13th Street
Fort Pierce, FL 34950

Garden Terrace Head Start Center
1110 North 32nd Street
Fort Pierce, FL 34950

Queen Townsend Head Start Center II
2202 Avenue Q
Ft. Pierce, FL 34950

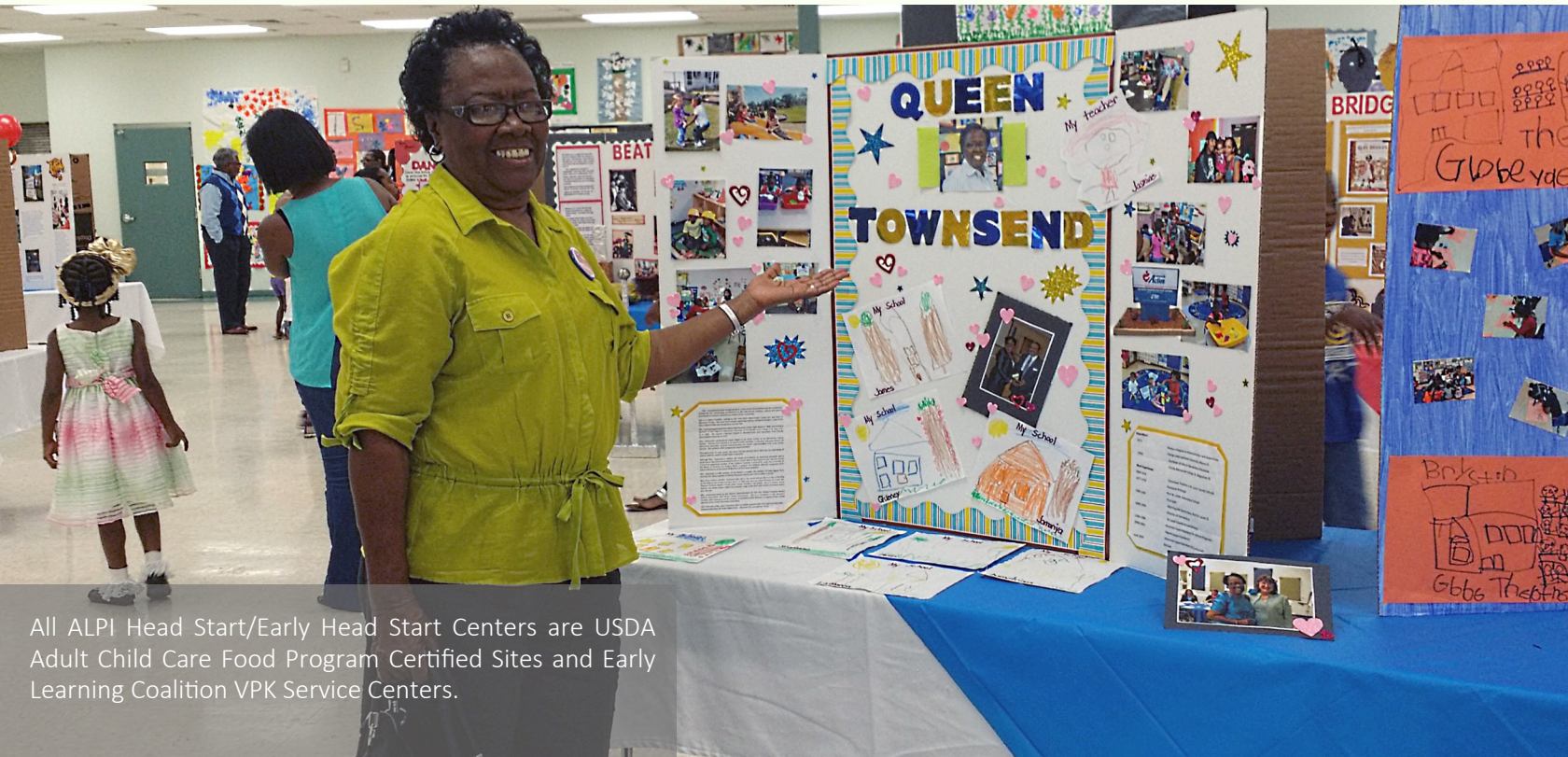
CONTRACTED CENTERS

Learning Tree Academy, Inc.
2808 Avenue D
Fort Pierce, FL 34947

Loving Care Child Development Ctr. Inc.
1207 South 28th St.
Fort Pierce, FL 34947

Sunrise Country Preschool
2706 Sunrise Blvd.
Fort Pierce, FL 34982

Jumpstart Development Center
1068 Pine Avenue
Lake Wales, FL 33853



All ALPI Head Start/Early Head Start Centers are USDA Adult Child Care Food Program Certified Sites and Early Learning Coalition VPK Service Centers.

CSBG

SERVICE DELIVERY SITES

The Community Services Block Grant (CSBG) Program is comprised of two components: the Family Self-Sufficiency Program (FSSP) and Emergency Services. Applicants may apply, through appointment only, for services at the following locations.

GLADES COUNTY

Goodwill Industries of Southwest Florida

HENDRY COUNTY

Goodwill Industries of Southwest Florida
The Salvation Army

HIGHLANDS COUNTY

Highlands County Coalition for the Homeless
Big Brothers/Big Sisters of the Sun Coast, Inc.
South Florida Community College

POLK COUNTY

Agricultural and Labor Program, Inc.
New Horizon Apartments
ALPI / Bartow Carver Center
Lakeview Park Community Center
ALPI / Bethune Neighborhood Center
Women's Resource Center
Boys and Girls Club of Lakeland, Inc.
Ridge Career Center
Center for Independent Living
ALPI / Ft. Meade Community Center
Women's Resource Center
Chain of Lakes Achievers
Family Fundamental-CSBG Services



"The ALPI Family Self-Sufficiency Program is the best thing I've ever done for myself! Without my caseworker's continued support, I don't think I could have gone as far as I did. Thank you ALPI for this program ... it was a tremendous blessing."

Shareka Lewis entered the ALPI Family Self-Sufficiency Program (FSSP) in November 2013. Shareka completed the program and graduated in early 2015 with a degree in Criminal Justice (Cum Laude).

LOW-INCOME HOME ENERGY ASSISTANCE SERVICE DELIVERY SITES

The Low-Income Home Energy Assistance Program (LIHEAP) provides assistance through payment of electric bills on behalf of eligible households. A client can receive one home energy payment and crisis payment per year. Services are provided in six counties at the following locations.

COLLIER COUNTY

COFFO
Macedonia Baptist Church

HENDRY COUNTY GLADES COUNTY

Goodwill Industries
of Southwest Florida

HIGHLANDS COUNTY

ALPI - Avon Park Office

MARTIN COUNTY

House of Hope
Port Salerno Church of God

POLK COUNTY

ALPI - Lake Alfred Corporate
Florence Villa CDC

ST. LUCIE COUNTY

In the Image of Christ, Inc.
Zion Daughters of Distinction
Ministries, Inc.

"I'M JUST SO
HAPPY TO
FIND A PLACE
THAT CAN STILL
HELP US."

*Donald P., 32
Applicant at
ALPI Energy Fair*

ALPI Sponsored LIHEAP Energy Fair, held on August 14, 2014 at the Winter Haven Recreational and Cultural Center. Over 700 families and individuals showed up for services.



FARMWORKER EMERGENCY ASSISTANCE SERVICE DELIVERY SITES

COLLIER COUNTY

COFFO
Collier County
Housing Authority
Immokalee Technical
Center

DADE COUNTY

Centro Campesino
South Dade Skills Center

GADSDEN COUNTY

PAEC

HARDEE COUNTY

East Coast Migrant HS
Heartland Work Force One Stop

HIGHLANDS COUNTY

South Florida State College

HILLSBOROUGH COUNTY

Adult Migrant Program
Good Samaritan Mission
RCMA Balm

MANATEE COUNTY

Manatee Technical Institute
Vocational Tech Center

ORANGE COUNTY

John Bridgers Community Center
Farm Worker's Association
Orange County School
District Westside Technical Center
RCMA-Zellwood

PASCO COUNTY

Moore Mickens Adult Education

PALM BEACH COUNTY

Farmworker Jobs and Education

POLK COUNTY

Adult Migrant Program
ALPI Corporate Office
Ben Hill Griffin, Jr. Elementary School
East Coast Migrant
Frostproof Care Center
Lake Wales Care Center
RCMA Mulberry

PUTNAM COUNTY

Adult Migrant Program

ST. LUCIE COUNTY

IRSC

SEMINOLE COUNTY

Adult Migrant Program
Seminole State College

VOLUSIA COUNTY

ALPI Project Achieve

ALPI providing services to farmworkers at
Centro Campecino in Auburndale, FL



ALPI at the Migrant Health and Education Fair in Bartow, FL.

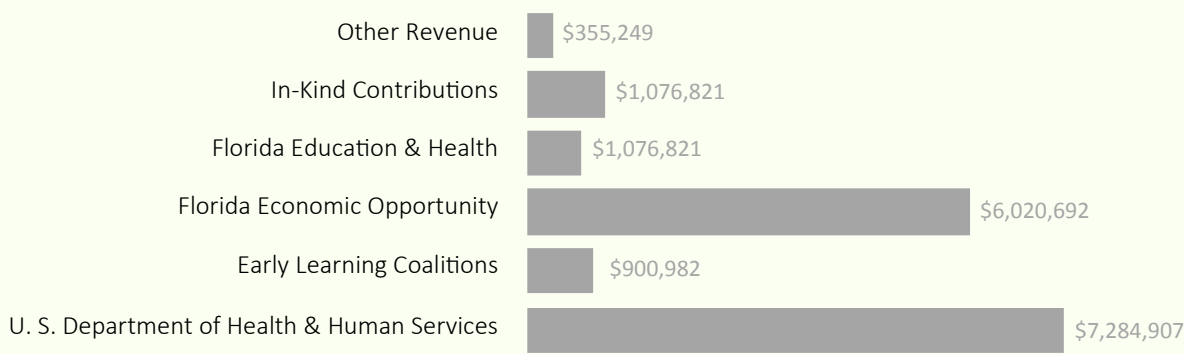


FINANCIAL HIGHLIGHTS

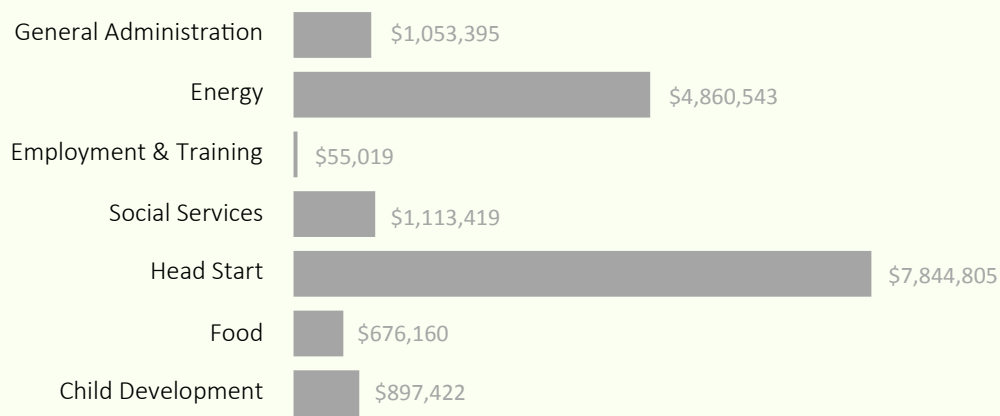
94%

OF ALL FUNDING RECEIVED GOES DIRECTLY TO PROGRAM SERVICES

ALPI CORE ANNUAL OPERATING REVENUE TOTAL: \$16,365,805



ALPI CORE ANNUAL OPERATING EXPENDITURES TOTAL: \$16,500,763



94% Program Services
6% General Administration

LAKE ALFRED, FL

EXECUTIVE DEPARTMENT

863-956-3491, x206
Deloris Johnson, CEO
P.O. Box 3126
Winter Haven, Florida 33885

ADMINISTRATION & OPERATIONS QUALITY CONTROL DIVISION

OPERATIONS & QUALITY CONTROL

863-956-3491, x204
Twila Steward

BUDGET & FINANCE

863-956-3491, x210
Dennis Gniewek

HUMAN RESOURCES

863-956-3491, x202
Christine Samuel

COMMUNITY SERVICES & ECONOMIC DEVELOPMENT DIVISION

863-956-3491, x212
Albert Miller

LIHEAP/COMMUNITY SERVICES

863-956-3491, x224
Cheryl Burnham

CSBG/ECONOMIC DEVELOPMENT

863-956-3491, x218
PaHoua Lee-Yang

FORT PIERCE, FL

CHILD DEVELOPMENT & FAMILY SERVICES DIVISION

863-956-3491, X215
Elizabeth Young
Eastern Region Administration Office
2202 Avenue Q
Ft. Pierce, FL 34950

HEAD START/EARLY HEAD START PROGRAM OPERATIONS

772-466-2631, x 11
Myrna Rodriguez

FROSTPROOF, FL

EARLY HEAD START PROGRAM OPERATIONS (Polk County)

863-635-3396
Alettta Stroder
701 Hopson Road
Frostproof, FL 33843

Celebrating 48 Years of Service

Then and now, ALPI's focus remains the same: to provide a mechanism towards achieving and maintaining family stability and economic self-sufficiency. Through our vast resources, we will address the areas of jobs and income, housing, education, social services, health, training, and community relations.

We will continue to serve as a source of information and hope in the community, as a clearinghouse for community needs and in the provision of a coordinated (mechanism) approach to the delivery of human services.

THE PROMISE OF COMMUNITY ACTION

Community Action changes people's lives, embodies the spirit of hope, improves communities, and makes America a better place to live. We care about the entire community, and we are dedicated to helping people help themselves and each other.





ALPI'S PROGRAMS and SERVICES ARE FUNDED IN PART BY:

U. S. Department of Health and Human Services, U. S. Department of Housing and Urban Development, Florida Department of Economic Opportunity, Florida Department of Education, United Way of St. Lucie County, United Way of Central Florida, Senior Connection Center, Inc., City of Ft. Pierce, County of St. Lucie, Department of Education (Adult Migrant Division), Florida Department of Health, Early Learning Coalition of Polk County, Florida Non-Profit Housing, Inc., St. Lucie County School Board, Children's Services Council of St. Lucie County, Early Learning Coalition of St. Lucie County, Inc., Florida Housing Finance Corporation

A Better Tomorrow is Today's Objective