

In This Issue

Summer Feeding and Work Experience1
 War on Poverty2
 FACA2
 Center for Independent Living3
 ALPI's Newest Success Story4
 ALPI Staff Attends DOE WIA4
 How ARRA Funds Helped5
 Children and Families: Pre-Service Training5
 Funding Sources6

From the Desk of the Editor

Head Start
45TH Anniversary



In celebration of Head Start's 45th anniversary, ALPI pays homage to Mary Jones for her single efforts to bring Head Start to the Agricultural and Labor Program in 1978. This unselfish effort has evolved into a win-win situation for both ALPI and the St. Lucie County community. Over the years, Head Start quickly became a model Early Childhood Development Program in the State of Florida.

The ALPI St. Lucie County Head Start program grew from 165 children and today there are 835 children enrolled in Head Start and its baby/toddler counterpart Early Head Start. We now operate in both St. Lucie and Polk Counties and over fifty percent of our operations are in partnership with United Way, Public Schools, and Local and State government entities.

Many "Thanks" to Mary Jones, the ALPI Board of Directors, ALPI Management and all of the ALPI Head Start and Early Head Start employees, volunteers, partners, current and past children and families served. Together, our efforts have realized a successful Head Start for more than 15,000 children and families.

Deloris Johnson
*Chief Executive
 Officer*

**SUMMER FEEDING
 WORK EXPERIENCE PROGRAM**

In early May, ALPI began to formulate a means to address the problems identified with Summer youth employment, as well as children's activities. ALPI owns a community center in one of the most economically challenged communities in Polk County (just outside of Frostproof) and decided to use this location for a Summer Feeding Program in conjunction with the Polk County School Board. In addition to the community center and the Summer Feeding Program, ALPI had established partnerships with several other nonprofit agencies that provided services and activities to children and youth in both Polk and Highlands Counties. This level of cooperation and coordination seemed ideal for address-

ing some of the identified problems and moved ALPI to development of a Summer Youth Work Experience Program as a compliment to the Summer Feeding Program

The children participating in the Summer Feeding Program were provided nutritious meals over an 8-week period funded entirely by the Polk County School Board. These children were also provided activities every day of the week. Activities included sports, arts/crafts, and guest pre-



senters from local community organizations such as the Polk County Sheriff's Office and local Health Centers. Youth were employed to assist with activities and to gain practical work experience. Additionally, a local elementary school teacher was recruited to coordinate, not only the activities at the community center, but also the second component of the Summer Work Experience Program.

The Summer Youth Work Experience Program was created to address the identified problems through several means. These were: (1) providing a Summer Activity Program for children in Frostproof; (2) providing staffing to



other community organizations for the operation of summer programs; and, (3) providing a summer enrichment program for ALPI's Headstart Center, just three blocks away from the Lakeview Park Community Center.

Through the CSBG/ARRA program, these goals (means) were met.

In addition to ALPI's Lakeview Park Community Center, there were three (3) other community organizations operating a total of eight (8) different sites

Continued on pg. 3



The War on Poverty...

45 Years and Counting



The War on Poverty is the name for legislation first introduced by United States President Lyndon B. Johnson during his State of the Union address on January 8, 1964. This legislation was proposed by Johnson in response to a national

poverty rate of around nineteen percent. The speech led the United States Congress to pass the Economic Opportunity Act, which established the Office of Economic Opportunity (OEO) to administer the local application of federal funds targeted against poverty.

Today, forty-five years later, the Children's Defense Fund's report on child poverty, *The State of America's Children 2010 Report*, has documented some very startling statistics. This report has concluded that more than 14 million children in America are poor, but they live in working families. A disproportionate number are Black and Latino. Poor children lag behind their peers in many ways beyond income: they are less healthy, trail in emotional and intellectual development, and are less likely to graduate from high school. Poor children also are likely to become the poor par-

ents of the future. Every year that we keep children in poverty costs our nation half a trillion dollars in lost productivity, poorer health and increased crime.

More than half of all poor children live in eight states (California, Texas, New York, Florida, Illinois, Georgia, Ohio and Michigan), and more than half of all children in extreme poverty live in these states plus Pennsylvania.

The Agricultural and Labor Program agrees with the CDF vision - that in order to end child poverty, we must invest in high quality education for every child, livable wages for families, income safety nets like job training and job creation, the Earned Income and Child Tax Credits, and work supports like child care and health coverage. We also need to work with partners to educate families about benefits for which they are eligible.

During the past program year ALPI, through its program efforts, has boldly stepped up to the plate to continue to fight the war on poverty through aggressive service delivery efforts, including expansion of Early Head Start, Low-Income Energy Assistance Program, and the American Recovery & Reinvestment Act. As long as poverty exists in our communities, ALPI will continue to fight side-by-side with those most affected and therefore, most in need.

A baby is born into poverty every 32 seconds and children are the poorest age group in America - with every fifth child being poor. ◀

The State of America's Children 2010 Report, a compilation of the most recent and reliable national and state-by-state data on key child indicators, including child poverty, may be viewed by going to:

www.childrensdefense.org/policy-priorities/ending-child-poverty/

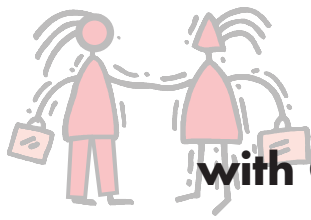


FACA: Celebrating 30 Years of Fulfilling The Promise of Community Action



Newly Elected Florida Association for Community Action, Inc. (FACA) Board Members

Congratulations to FACA Board Chairperson, William Holt (*back row, 2nd from left*) and FACA Board Treasurer, Deloris Johnson (*Front Row, 2nd from left*). Mr. William Holt also serves as ALPI Board Chairperson and Ms. Deloris Johnson is the ALPI Chief Executive Officer. FACA's mission is to serve as a network of Florida CAA programs, Head Start programs, Weatherization and other sanctioned programs and to raise the health, education, and economic standards of Florida's economically disadvantaged citizens. FACA serves its members through educational programs, information exchange, advocacy and support services, collaboration and shared resources, developing standards of practice and evaluation, networking with other groups and developing management and committee structures.



ALPI Works Hand-In-Hand with Center for Independent Living

In mid-year of 2007, ALPI received the Community Services Block Grant (CSBG) through the Department of Community Affairs in Tallahassee. CSBG is a Federal grant designed to provide services to low income families in the communities. ALPI began searching for other agencies that could help the low-income communities in achieving self-sufficiency.

One of those agencies was the Center for Independent Living (CIL). This Agency had provided services to the disabled population in the community for many years. The disabled population was one of the target populations

that needed extra assistance to be able to achieve and/or maintain independence.

Through a partnership between ALPI and CIL, ALPI provided the case management and CIL assisted with identifying the emergency needs of the disabled community.

ALPI was also able to assist CIL's disabled clients with medical equipment to help them become independent in their homes. Additionally, ALPI assisted disabled individuals with their rent and/or electric bills thereby allowing them to remain in their own homes.

John Hurt (CIL Site Manager) com-



mented that, "The ARRA EA funds have helped numerous people improve the quality of their lives and has given them independence and choices."

Through ALPI's partnership with CIL, our disabled clients are becoming self-sufficient in their community. This demonstrates the greatness of what ALPI and CIL has been able to accomplish this year and can continue to accomplish in the future.

SUMMER FEEDING, *Continued from pg. 1*

where summer activities were made available. Participating Agencies included: Boys and Girls Clubs of Lakeland, Mulberry, Winter Haven and Haines City; Girls, Incorporated of Winter Haven; and, Big Brothers/Big Sisters of Highlands County. Each site was assigned a number of youth employees to support regular staff in providing the various available services. These youth were supervised by the organizations' site supervisors.

The Summer Program was designed to provide youth from the communities with employment opportunities, and to provide preschool preparation for ALPI's Headstart children in Frostproof. Through the Summer Program, ALPI was able to fund the salaries of five (5) teachers and/or Teacher's Aides at the Frostproof Center. This enabled ALPI to offer a "Summer Enrichment Program" for

its children. The program was designed to help the children hone and master the basic skills needed to be successful in kindergarten and beyond. This also provided the five staff members with continuous employment over the summer.

Through ALPI's Summer Work Experience Program, a major need in Polk and Highlands Counties was addressed at a minimal cost. A total of sixty-one (61) youth between the ages of 16 and 18 were provided summer employment for approximately eight (8) weeks. This resulted in more than \$146,000 being paid at an average of \$2,400 per youth.

The Summer Work Program also provided more than 50 children with nutrition and developmental activities over the summer. These children would have otherwise been, in

many cases, susceptible to delinquency and negative peer pressure. The lack of such a program would have also created problems for parents who, many times, have to make arrangements for their children during the summer.



ALPI's Newest Success Story

For more than five (5) years the Agricultural and Labor Program, Incorporated (ALPI) has been operating a vocational/technical center in Volusia County. The ALPI Technical Education Center (ATEC) was first established around 2005 to provide ALPI's farmworker clients with training for an alternative career as Nursing Assistants. Through its license with the Commission for Independent Education, ALPI has provided diplomas to more than fifty (50) farmworkers in the Deland area. Additionally, ALPI has been able to offer an affordable way of becoming a Certified Nursing Assistant.

In 2009 ALPI moved from two modular buildings in Pierson to a storefront location in Deland. This has enabled ALPI to expand its offerings. As a result, in 2010, ALPI received



licensing for Phlebotomy and Home Health Aide training. This enabled ALPI to reach out more into the community and to offer more alternatives in obtaining healthcare related training. Around March or April of 2010, ALPI started its first Home Health Aide class and shortly afterwards was able to offer a Spanish version of the class. This culminated in a graduation ceremony where ALPI was able to bestow diplomas on more than fifteen (15) students. Many of the students were farmworkers served by ALPI through its Florida Department of Edu-

cation WIA-167 program, but several of the students came from the community. The graduation ceremony was met with great enthusiasm and ended with a potluck dinner and a Disc Jockey (ALPI's Board Member Chester McNorton).

Shortly after the graduation, ALPI was able to offer its first Phlebotomy class and, since then, has offered another Home Health Aide class with a fourth one (Spanish version) in the works.



A Special THANK YOU Letter

Dear ALPI:

This thank you letter is long overdue. I would have to say the day I started your program I didn't know what to expect. The entire process was simple and fast - my needs were definitely met as a client. My case manager, Fred Stickney (pictured top), was a wonderful case manager. On the days we had our meetings he would give me words of encouragement and constantly reminded me that I CAN finish school.

This program was not just here for me financially, but also emotionally. This is something that I will always cherish. If it wasn't for this program, my dreams of becoming a nurse would not have come true. Once again, I would like to say thank you to everyone at ALPI. If someone is truly determined, this program can make a big difference in your life - I'm living proof of that.

Shaarky Brinson



ALPI CSBG/Economic Services Director Pa Houa Lee-Yang and staff member Robert Gaytan attended the Department of Education WIA 167 Program for Farmworkers' Conference in Melbourne, FL. The conference addressed many of the concerns of farmworkers around the state and presented an opportunity for ALPI staff to meet the United States Department of Labor Secretary, Hilda Solis. Secretary Solis was there to honor all the farmworkers for their hard work and determination in becoming successful immigrants who are making

ALPI Staff Attends DOE WIA-167 Program for Farmworkers' Conference



changes in their career paths. Secretary Solis gave thanks to agencies like ALPI and other WIA-167 grantees for reporting great success and outcomes in the delivery of services to an often overlooked population. She stressed to all WIA-167 programs to continue their hard work and further encouraged farmworkers to make changes to better educate themselves and their families and to become self-sufficient for a real AMERICAN DREAM.

How
**ARRA
Funds**
Helped ALPI's
Clients and
Communities



In October of 2009, the Agricultural and Labor Program, Inc. was awarded an additional 1.4 million dollars in Community Services Block Grant (CSBG) funding through the American Reinvestment Recovery Act (ARRA). With the additional funding, ALPI's CSBG/Economic Services Department was able to hire 4 Client Services Specialist II and two Job Developers to assist ALPI's clients in building a better foundation for their families and their communities, as well as moving toward personal self-sufficiency.

Although the funding was for fifteen (15) months, ALPI had eleven months to utilize the funding for the creation of jobs and the provision of training to assist clients in obtaining employment and employability skills. This was going to be a challenge for ALPI, but a worthwhile and rewarding one. It was a true test of how fast ALPI could mobilize to begin addressing the immediate and critical needs of communities during this economic downturn.

ALPI's staff worked fast, hard and vigorously to assist clients in Polk and Highlands County, along with ALPI's sub-recipients, partners, and vendors throughout the two counties. Staff was able to provide short-term case man-

agement services to over five hundred families. A variety of training such as, Nursing Assistant, Home Health Aide, Phlebotomy, Computer Literacy, Commercial Drivers Licensing, GED, Culinary Arts, OSHA-30 and Forklift, as well as many others, were provided through the use of ARRA funding.

With the support of ALPI's dedicated staff (pictured above) and ARRA funds, staff was able to place approximately 200 clients into jobs, including 71 summer jobs created specifically for the unemployed youth of Polk and Highlands Counties. Many clients were placed as truck drivers, Nursing Assistants, and Home Health Aides, with many more receiving their GED. One of the clients was assisted in finishing off her CDA courses and received her license. That client recently opened her own business, running a childcare center in Auburndale, FL.

There were many thanks and many tears of joy coming from clients that were in the programs. The challenge was met with the fervor of a true Community Action Agency and, although the funding is now gone, ALPI will never stop addressing the needs of its clients and their communities because serving those needs is ALPI's mission.

ALPI's Nurturing Fatherhood Program

ALPI's Nurturing Fatherhood Program is off to a good start this year. Each ALPI Head Start/Early Head Start Center held a morning Meet & Greet with Kevin Singletary (ALPI Family Partnerships Coordinator) and the fathers. Mr. Singletary spoke with more than 50 fathers! Fathers, grandfathers, uncles, step-fathers, and positive adult males came out to volunteer and participate in the NFP. The men shared ideas about activities they would like to participate in and they also were given an overview of the curriculum used in the program.

On October 20, 2010, the ALPI Head Start/Early Head Start Nurturing Fatherhood Program was featured on the local radio station WIRA 1400 a.m. Jumpin Joe, the host of the morning show "Hot Talk", interviewed Mr. Singletary. They discussed the purpose of the program, how it can be a positive influence on the Treasure Coast, and how interested people in the community can get involved with the NFP. Jumpin Joe extended an invitation to feature the NFP quarterly to discuss issues related to men and how to be more effective fathers to children in our community.



Children and Families Division

PRE-SERVICE TRAINING

Training topics included:

- ALPI's Personnel Policies and Procedures
- Child Abuse and Neglect
- Getting to Know the Work Plan and Operational Policies and Procedures
- How to Design an Approach to Analyze Data on Children's Progress and Accomplishments
- Child Development Appropriate Practices for Infants, Toddlers and Preschool Children
- Record Keeping & Case Management
- Health and Safety
- Transportation Safety
- Facilities Physical Environment



The 2010-2011 Children and Families Division Pre-Service Training was held on August 16-20, 2010.

Over 190 staff participated.

Trainers were

ALPI's Management Staff, Yvonne Parham, (ALPI HR Director), and Michelle Akins, (CMS Dept. of Health Quality Assurance).

CONTACT INFORMATION

CORPORATE OFFICE

P.O. Box 3126
Winter Haven, Florida 33885
(863) 956-3491
Fax (863) 956-3357
Admin@ALPI.org

Executive Office

Deloris Johnson,
Chief Executive Officer —
Ext. 206
DJohnson@ALPI.org

Twila Smith
Operations & Quality Control
Director—Ext. 204
TSteward@ALPI.org

ADMINISTRATION AND OPERATIONS QUALITY CONTROL

Budget and Finance

Norris Ann Roland,
Director – Ext. 210
NARoland@ALPI.org

Human Resources

Yvonne Parham,
Director – Ext. 202
YParham@ALPI.org

COMMUNITY SERVICES AND ECONOMIC DEVELOPMENT DIVISION

Albert Miller,
Deputy Division Director – Ext. 212
AMiller@ALPI.org

Cheryl Burnham, LIHEAP Community
Services Director – Ext.224
CBurnham@ALPI.org

PaHoua Lee-Yang, CSBG/Economic
Services Director – Ext. 218
PYang@ALPI.org

CHILDREN AND FAMILY SUPPORT SERVICES DIVISION

Eastern Region

Administration Office
720 Delaware Avenue
Ft. Pierce, Florida 34950
(772) 466-2631
Fax (772) 464-3035

Head Start Services

Mary Jones, Director – Ext. 15
MJones@ALPI.org

Child Development & Early Head Start Services

Elizabeth Young, Director – Ext. 215
(863) 956-3491
EYoung@ALPI.org

ALPI's Programs and Services are Funded in part by:



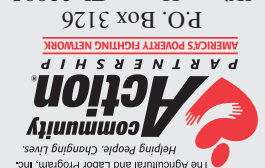
Early Learning Coalition of Polk County, Lincoln Park Child Care, Inc.,
the Ft. Pierce Housing Authority, and the Polk County School Board

Mission Statement

*The mission of The Agricultural and Labor Program, Inc.,
is to propose, implement, and advocate
developmental and human service delivery programs
for the socially and economically disadvantaged;
children and families; and farmworkers.*

The ALPI Newsletter is Published by
The Agricultural and Labor Program, Inc.
The ALPI Newsletter is a quarterly publication designed
to inspire and inform all employees, volunteers, parents,
partners, and supporters of ALPI who have helped us
through the years to grow the organization into what it has
become today. We welcome your suggestions, comments,
and ideas. Have a question about a feature? Heard an
interesting story? Share it with us by phone, mail, or
fax (refer to Contact Information).
Note: No permission is required to excerpt
or make copies of articles, provided they are
distributed at no cost. For other uses, please send
written permission requests to ALPI's Corporate
Office. Copyright ©2010 by The Agricultural
and Labor Program, Inc.

Winter Haven, FL 33885



The Agricultural and Labor Program, Inc.
Helping People. Changing Lives.

Non-Profit Org.
US Postage
PAID
Permit No. 1
Lakeland, FL