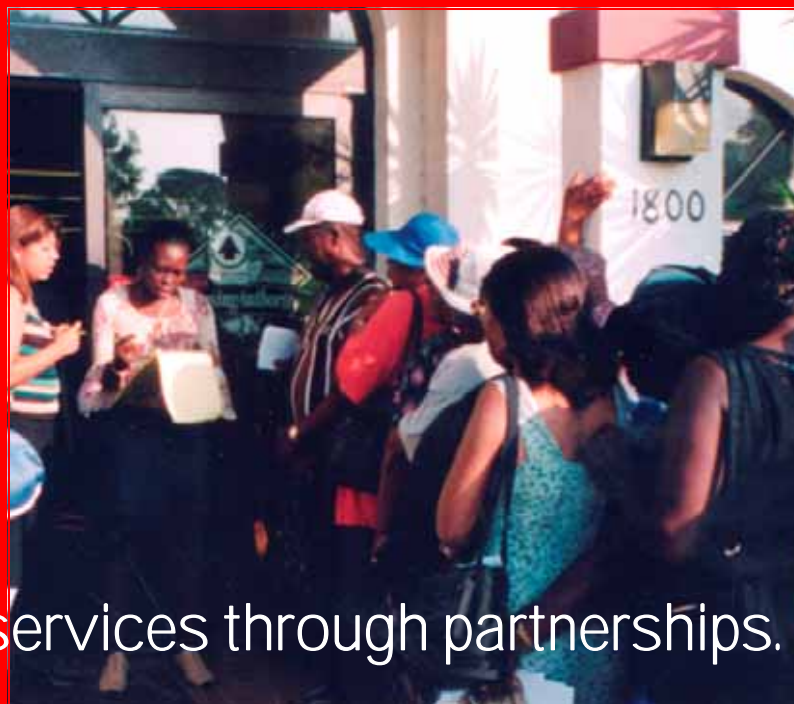




# The Agricultural and Labor Program, Inc.

2006 Annual Conference Luncheon



Providing a flow of community services through partnerships.

The Agricultural and Labor Program, Inc. (ALPI), headquartered in Winter Haven, Florida, is an IRS certified 501(c)(3) private, nonprofit organization. The Agricultural and Labor Program is a direct descendent of The Agricultural and Labor Project, established in 1968 by the Coca-Cola Company to improve the quality of life for farm workers in their Florida citrus operations. Today, ALPI serves the total spectrum of socially and economically disadvantaged children and families throughout Florida.

In the early 70's, the organization made available child care services to the children of migrant and seasonal workers when no other service providers were available to meet the child care needs of these families. Since the late 70's, ALPI has continued to operate as the Central Agency for Subsidized Child Care Services that provides child care for as many as 6,000 children per year!

Over the years, a vast network has been established by ALPI. This network is comprised of agencies, churches, organizations and private groups and/or individuals whereby some provide direct financial assistance, others distribute applications for services. Partnerships and collaborative efforts between ALPI and the communities we serve are crucial to the success of service delivery.

In the years since its inception, The Agricultural and Labor Program, Inc. has continued to grow and to expand efforts to assist those persons that the organization was chartered to serve. *This effort is continuous and will exist as long as there are persons needing services.*



ALPI's 1st Intake Ctr—1968  
St. Lucie County, Florida

### Five Underlying Principles

*The Agricultural and Labor Project continues to be based on five underlying principles that have guided all its activities to date:*

- *Involvement of People*
- *Emphasis on long term accomplishments rather than promises*
- *Assurances of economic viability*
- *Emphasis on self-help*
- *A sound, integrated, total systems approach*

### Areas Being Addressed

*Through a vast number of resources, ALPI continues to address the critical areas of :*

- *Jobs and income*
- *Housing*
- *Education*
- *Social services*
- *Health*
- *Training*
- *Community relations*

## Table of Contents

Mission Statement .....	1
Message from Board Chairperson .....	2
Greetings.....	3
Guest Speaker Biography .....	8
Board of Directors, Advisory Councils and Policy Council .....	9
ALPI's Circle of Friends .....	10
Corporate Membership Business Agenda .....	11
Corporate Meeting Luncheon & Board Installation Program .....	12
Highlights: Regional Advisory Councils .....	13
Service Delivery Activities & Significant Outcomes .....	14
Statement of Activities (Support & Revenue) .....	19
State of Financial Position .....	20
Contact Information .....	21
Corporate Membership Information .....	22
Corporate Application .....	23

## **ALPI's Mission Statement**

The mission of The Agricultural and Labor Program, Inc. is to propose, implement, and advocate developmental and human service delivery programs for socially and economically disadvantaged children and families, as well as farm workers.

Our focus is to provide a mechanism towards achieving and maintaining family stability and economic self-sufficiency. Through our vast resources, we will address the areas of jobs and income, housing, education, social services, health, training, and community relations.

We will continue to serve as a source of information and hope in the community, as a clearinghouse for community needs and in the provision of a coordinated (mechanism) approach to the delivery of human services.

## Message from the ALPI Board Chairperson



### WELCOME COMMUNITY LEADERS, FRIENDS, STAFF AND CORPORATE MEMBERS!

**Deloris C. Johnson**  
Chief Executive Officer

**Corporate Office:**  
7301 Lynchburg Road  
Winter Haven, Florida 33881  
(863) 956-3491  
Toll Free: 1 (800) 330-3491  
Fax: (863) 956-3357  
E-Mail: admin@alpi.org

**ADMINISTRATION & COMMUNITY SERVICES DIVISION**

**Administration Services**

Budget & Finance  
Human Resources  
MIS/Computer Operations

**Community Services**

**LINEAP Services**

**Service Areas:** Collier, Glades, Hendry, Martin & St. Lucie Counties

**Housing Counseling Services**

**Service Area:** Polk County

**Farmworker Emergency Services**

**Service Areas:** Statewide

**Training and Employment Services**

**Service Area:** Volusia County

**ALPI TECHNICAL EDUCATION CENTER**

**Service Area:** Volusia County

**CHILDREN AND FAMILY SERVICES DIVISION**

**Head Start Services**

**Service Areas:** Polk and St. Lucie Counties

**Child Care Food**

**Service Areas:** Indian River, Martin, Okeechobee, Polk (Frostproof), & St. Lucie Counties

**Child Care**

**Service Areas:** All Child Care and Head Start Service Areas

**Early Head Start Services**

**Service Area:** St. Lucie County

**Eastern Region Administration Office:**

720 Delaware Ave.  
Ft. Pierce, FL 34950  
(772) 466-2631  
Toll Free: 1 (800) 791-3099  
Fax: (772) 464-3035



All Affiliates of Community Action Partnership

Thank you for taking the time to join us in celebrating our 37<sup>th</sup> Annual Corporate Meeting. On behalf of the ALPI Board of Directors it is my pleasure to convey our appreciation to each one of you.

The fact that we serve thousands of people in the State of Florida each year demonstrates that the Agricultural and Labor Program, Inc.'s mission to propose, implement and advocate developmental and human services delivery programs for the socially and economically disadvantaged, children and families is effective and being fulfilled on a daily basis. Your attendance today and continued support of ALPI demonstrates the positive aspects of what this great organization represents.

As we look ahead to the new year, we are resolved to continue to meet the challenges put before us. Although we face a future that includes recent budget cuts, etc., the Board is committed to its fiduciary responsibility. With the leadership of ALPI's dedicated Chief Executive Officer (and her staff), we will continue our quest to assist the families and children that we endeavor to serve.

I wish to thank Deloris Johnson, ALPI's committed Chief Executive Officer, her staff, our volunteers, community leaders, friends, business partners and the ALPI Board of Directors for a job well done. Without everyone's contributions and determination to make a difference in our communities, we would not be where we are today.

Sincerely,

*William Holt*

William Holt  
ALPI Board Chairperson

PROGRAMS AND SERVICES ARE FUNDED IN PART BY:



City of Ft. Pierce, County of St. Lucie, Department of Education, Adult Migrant Division, Florida Department of Health, St. Lucie County School Board, Youth and Family Alternatives, Workforce Development Board of Flagler and Volusia Counties, Early Learning Coalition of St. Lucie County, Inc. and Early Learning Coalition of Indian River, Martin and Okeechobee Counties, Inc.

**THE AGRICULTURAL AND LABOR PROGRAM, INC. — PROVIDING A CONSTANT FLOW OF COMMUNITY SERVICES SINCE 1968**  
AN EQUAL OPPORTUNITY EMPLOYER

# Greetings



January 17, 2006

**Deloris C. Johnson**  
Chief Executive Officer

**Corporate Office:**  
7301 Lynchburg Road  
Winter Haven, Florida 33881  
(882) 956-3481  
Toll Free: 1 (800) 330-3491  
Fax: (882) 956-3357  
E-Mail: admin@alpi.org

**ADMINISTRATION & COMMUNITY SERVICES DIVISION**

**Administration Services**  
Budget & Finance  
Human Resources  
MIS/Computer Operations

**Community Services**  
**LINEAP Services**

**Service Areas:** Collier, Glades, Hendry, Martin & St. Lucie Counties

**Housing Counseling Services**  
**Service Area:** Polk County

**Farmworker Emergency Services**  
**Service Areas:** Statewide

**Training and Employment Services**  
**Service Area:** Volusia County

**ALPI TECHNICAL EDUCATION CENTER**  
**Service Area:** Volusia County

**CHILDREN AND FAMILY SERVICES DIVISION**

**Head Start Services**  
**Service Areas:** Polk and St. Lucie Counties

**Child Care Food**  
**Service Areas:** Indian River, Martin, Okeechobee, Polk (Frostproof), & St. Lucie Counties

**Child Care**  
**Service Areas:** All Child Care and Head Start Service Areas

**Early Head Start Services**  
**Service Area:** St. Lucie County

**Eastern Region Administration Office:**  
720 Delaware Ave.  
Fl. Pierce, FL 34950  
(772) 464-2831  
Toll Free: 1 (800) 791-3099  
Fax: (772) 464-3035



An Affiliate of Community Action Partnership

On behalf of The ALPI Southern Regional Advisory Council, I would like to welcome you to our 37<sup>th</sup> Annual Corporate Meeting & Luncheon held on this 28<sup>th</sup> day of January, 2006.

It is during this time, that we take the opportunity to bestow our gratitude and appreciation to our contributors for their continued support of the ALPI Organization. It is through their kind generosity that the ALPI is able to provide "a constant flow of community services" to children and families throughout the State of Florida.

The Southern Regional Advisory Council is one of four advisory councils (Central, Eastern, & Northern) that serves the ALPI Organization through an advisory capacity. The councils were formed in local communities to assist the ALPI Board in its efforts to address the needs and concerns of its service population.

In closing, I would like to personally welcome each of you to visit our website at [www.alpi.org](http://www.alpi.org) and become familiar with the many services that ALPI provides within your communities.

Sincerely,

A handwritten signature in black ink, appearing to read 'Lester Roberts'.

Lester Roberts, Chairperson  
Southern Regional Advisory Council

PROGRAMS AND SERVICES ARE FUNDED IN PART BY:



City of Ft. Pierce, County of St. Lucie, Department of Education, Adult Migrant Division, Florida Department of Health, St. Lucie County School Board, Youth and Family Alternatives, Workforce Development Board of Flagler and Volusia Counties, Early Learning Coalition of St. Lucie County, Inc. and Early Learning Coalition of Indian River, Martin and Okeechobee Counties, Inc.

**THE AGRICULTURAL AND LABOR PROGRAM, INC. — PROVIDING A CONSTANT FLOW OF COMMUNITY SERVICES SINCE 1968**  
**AN EQUAL OPPORTUNITY EMPLOYER**

# Greetings



January 17, 2006

**Deloris C. Johnson**  
Chief Executive Officer

**Corporate Office:**  
7301 Lynchburg Road  
Winter Haven, Florida 33881  
(863) 956-3491  
Toll Free: 1 (800) 330-3491  
Fax: (863) 956-3357  
E-Mail: [admin@alpi.org](mailto:admin@alpi.org)

**ADMINISTRATION & COMMUNITY SERVICES DIVISION**

**Administration Services**

Budget & Finance  
Human Resources  
MIS/Computer Operations

**Community Services**

**LHEAP Services**

**Service Areas:** Collier, Glades, Hendry, Martin & St. Lucie Counties

**Housing Counseling Services**

**Service Area:** Polk County

**Farmworker Emergency Services**

**Service Areas:** Statewide

**Training and Employment Services**

**Service Area:** Volusia County

**ALPI TECHNICAL EDUCATION CENTER**

**Service Area:** Volusia County

**CHILDREN AND FAMILY SERVICES DIVISION**

**Head Start Services**

**Service Areas:** Polk and St. Lucie Counties

**Child Care Food**

**Service Areas:** Indian River, Martin, Okeechobee, Polk (Frostproof), & St. Lucie Counties

**Child Care**

**Service Areas:** All Child Care and Head Start Service Areas

**Early Head Start Services**

**Service Area:** St. Lucie County

**Eastern Region Administration Office:**

720 Delaware Ave.  
Ft. Pierce, FL 34950  
(772) 466-2631  
Toll Free: 1 (800) 791-3099  
Fax: (772) 464-3035



an affiliate of Community Action Partnership

The Central Region Advisory Council welcomes you to the ALPI 37th Annual Conference Luncheon. You have shown by your presence today that you care about this Agency, its mission and its purpose. It has been a miracle to stay alive and viable for this length of time carrying out project after project to assist and serve those in need.

We have the proud distinction of being the only ALPI Council with one of the original members of the Board still active and well, Council Member Arabelle Wiggins. She remembers the very first annual meeting that was held in Winter Haven, Florida and still functions as a pioneer in the Winter Haven community.

On behalf of the Central Region Advisory Council thank you for your continued support of The Agricultural and Labor Program, Inc. Please enjoy your visit with us today and we invite you back for next year's Annual Conference Luncheon.

Sincerely,

*Yvonne H. Parham*

Yvonne H. Parham  
Human Resources Director  
Staff Liaison to Central Region

PROGRAMS AND SERVICES ARE FUNDED IN PART BY:



City of Ft. Pierce, County of St. Lucie, Department of Education, Adult Migrant Division, Florida Department of Health, St. Lucie County School Board, Youth and Family Alternatives, Workforce Development Board of Flagler and Volusia Counties, Early Learning Coalition of St. Lucie County, Inc. and Early Learning Coalition of Indian River, Martin and Okeechobee Counties, Inc.

**THE AGRICULTURAL AND LABOR PROGRAM, INC. — PROVIDING A CONSTANT FLOW OF COMMUNITY SERVICES SINCE 1968**  
**AN EQUAL OPPORTUNITY EMPLOYER**

# Greetings

**Jack R. Myers**  
Commissioner, District 3  
Chairman



Board of County Commissioners

330 W Church St  
Drawer BC01  
P O Box 9005  
Bartow FL 33831-9005  
(863) 534-6050  
Fax: (863) 534-7655  
JackMyers@polk-county.net

January 28, 2006

The Agricultural and Labor Program, Inc.  
7301 Lynchburg Rd  
Winter Haven FL 33881

Dear Friends,

On behalf of the Board of County Commissioners of Polk County, I welcome you to Winter Haven and to Polk County. We are delighted that you have chosen Polk County for 37th Annual Meeting and Luncheon of The Agricultural and Labor Program, Inc. (ALPI).

ALPI has provided much needed services to migrant and low-income individuals and families in Polk County for the last 37 years. These services include Affordable Housing Development, First-Time Home Ownership Development, HUD Housing Counseling, Child Care and Before and After School Care, Head Start, Emergency Assistance, and Jobs and Economic Development. Many of our residents depend on ALPI for these vital services. We are grateful to ALPI for providing life-improving assistance in Polk County, and their goal of "helping people to help themselves".

In addition to assistance provided in Polk County, ALPI provides services in Collier, Glades, Hendry, Indian River, Martin, Okeechobee, St. Lucie, and Volusia Counties.

I hope you will enjoy your visit with us today, and hope you will have time to enjoy Polk County during your stay. Thank you, again, for the services you provide to assist our residents.

Sincerely,



Jack R. Myers, Chairman  
County Commissioner, District 3

*Equal Opportunity Employer*



## Greetings

# WINTER HAVEN

## *The Chain of Lakes City*

City Commission

January 18, 2006

ALPI Children & Family Support Services  
Deloris C. Johnson, Chief Executive Officer  
7301 Lynchburg Road  
Winter Haven, Florida 33881

RE: Agricultural and Labor Program, Inc. (ALPI) 37<sup>th</sup> Annual Meeting

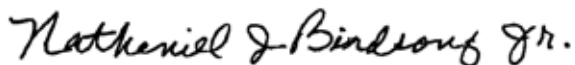
Dear Ms. Johnson:

It is my pleasure to extend personally, as well as on behalf of the Winter Haven City Commission and all the residents of our community, a most cordial welcome to the Agricultural and Labor Program, Inc.

The services you provide, in "helping people to help themselves", and your dedication to the citizens of the Winter Haven community over the past 37 years, are very much appreciated.

Our sincere "thanks" to the Staff of the Agricultural and Labor Program, Inc. We wish you continued success in the years ahead.

Sincerely,



Nathaniel J. Birdsong, Jr.  
Mayor ProTem  
City of Winter Haven

:bjm

P. O. Box 2277 + Winter Haven, FL 33883-2277  
Phone: 863.291.5600 + Fax: 863.298.5293 + [www.mywinterhaven.com](http://www.mywinterhaven.com)  
Email: [bmckenzie@mywinterhaven.com](mailto:bmckenzie@mywinterhaven.com)

## Greetings



120 E. Pomelo Street  
Lake Alfred, FL 33850-2135

**CITY OF LAKE ALFRED**  
Office of the City Manager

Ph.: (863) 291-5270  
Fax: (863) 291-5317

January 17, 2006

Deloris Johnson  
Chief Executive Officer  
Agricultural and Labor Program, Inc.  
7301 Lynchburg Road  
Winter Haven, FL 33881

Dear Ms. Johnson

I would like to take this opportunity to congratulate the Agricultural and Labor Program on their continued success in the Lake Alfred community for the past 37 years. The citizens of Lake Alfred are fortunate to have ALPI available to "help them help themselves".

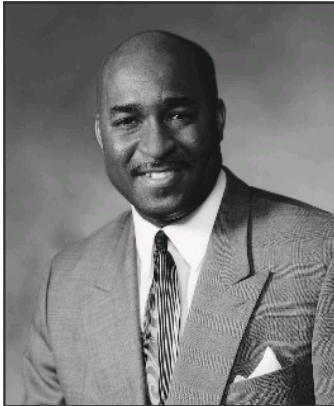
Thank you for your commitment to the people of our region.

Sincerely,

A handwritten signature in cursive script that reads "Nancy Z. Daley".

Nancy Z. Daley  
Mayor

## Guest Speaker



Derrick Len Span is the former National President of the Community Action Partnership. While at the Community Action Partnership Mr. Span provided leadership and guidance for the Partnership's network of 1,000 Community Action Agencies (CAAs). At the Partnership, the nation's most extensive and effective anti-poverty organization, he oversaw several advocacy initiatives, including Dialogues on Poverty, Policy Forums, and Annual Conferences. Mr. Span also developed national program concepts, fund-raisers, and recommended policy changes, while working to implement strategic plans on key poverty-related issues, such as a branding campaign aimed at raising national awareness of Community Action. He also traveled extensively on annual national tours visiting regions and keeping the network energized, and informed, and united toward the goal of eradicating poverty.

Prior to becoming the national president of Community Action Partnership in June 2002, Derrick Span was the Executive Director of the Center for Community Building in Harrisburg, PA, where he handled the management and budget of three state offices. He has also served as President/CEO of the Urban League in Harrisburg, PA and Broome County, NY. In addition, he has been a radio talk show host, guest newspaper columnist, adjunct professor, and co-pastor. In 1997 he founded D.L. Span and Associates, a diversity training workforce development consulting firm.

Mr. Span holds masters degrees from the Inter-Denomination Theological Center (Theology and Philosophy) and Binghamton University (Social Science and Human Development), as well as a bachelor's degree from the University of Louisville (Sociology). Throughout his career, he has received numerous awards, including the Urban League Recognition of Service Award, City of Harrisburg's Distinguished Service Award, the Pennsylvania Legislative Black Caucus Service Citation, Ohio State Legislature Citation, and Kentucky Colonel Award.

"It is critical that we develop 21st century communicators [for fighting poverty in America]. All of our CAAs will benefit by diversity training because we must be able to effectively interact with an array of individuals and their needs. Poverty is multicultural. Pain is multicultural."

*Derrick Len Span*

## Special Thanks

### 2005 Board of Directors

William Holt, Chairperson  
David Walker, Vice Chairperson  
Josephine Howard, Secretary  
Christine Samuel, Treasurer  
Glaister Brooks, Parliamentarian  
Katie Clarke

Patricia Gamble  
Marjorie Gaskin  
Clarence Grier  
Marva Hawkins  
Vernon McQueen  
Grace Miller

Lester Roberts  
Kerry Skurtu  
Terry Wellington  
Arabell Wiggins (Board Emeritus)  
Velma Williams

### 2005 Regional Advisory Councils

Louvenia Crumity  
Ernestine Davis  
Betty Doles  
Clora Dubose  
Patricia Gamble

Clarence Grier  
Emma Hymes  
Sophia Harris  
Lillie Jackson  
Viola Leone

Lena Lisbon  
Johnnie McNair  
Julia Miller  
Jacqueline Rentz  
Gregory Robinson

Helen Rowe  
Johnnie Thomas  
Ruby Willix  
Arabell Wiggins

Katie Alston  
Frances Cooper  
Dexter Francis  
Marjorie Gaskin

Constance Griffin  
Eddie Mae Hill  
William Holt  
Vivian Mitchell

Fannie Moore  
Phyllis Nicholas  
Gena Spivey

Constance Anderson  
Sylvia Bodison  
Almelia Brown  
Irma Cooper  
Sandra Gaines

Charles Harris  
Josie Harris  
Lenton Harris  
Marva Hawkins  
Arthur Holley

Rosemary McDonald  
Linda Medlock  
Thelma Mike  
Grace Miller  
Renay Oliver

Evelyn Seabrook  
Charlie Wilder  
Willie Williams

Sandra Alexander  
Katie Clarke  
Hazel Isidore  
Bernice Lopez

Pearlie Lowery  
Emma Malcolm  
Lester Roberts  
Annie Robinson

Arletha Sims  
Elvia Vickery  
Terry Wellington

Delana Noble, Chairpeson  
Joe Costa, Vice Chairperson  
Claudia Sessing, Treasurer  
Roshonda Bailey, Secretary  
Eduelge Belot  
Jennifer Holley  
Joi Lang  
Nancy Louis

Sonia Medina  
Keenya Mitchell  
Tequila Smith  
**Community Reps.**  
Mary Hamilton (Chairperson)  
Glaister Brooks (Rep. to Board)  
Dr. Christine Taylor (Exec. Zone Dir.)

Gerald Mitchell  
David Walker  
**Policy Council Alternates**  
Hugerne D. Coleman  
Itamine Deravil  
Maria Esquibel  
Sarah Jackson

Ilecia Joseph  
Marie LaFortune  
Uquanna Peavy  
Laticia Reed  
Shauntell Sanders  
Dana Santamaria  
Shameka C. Smith

## ALPI's Circle of Friends

Twila Smith  
Deloris Johnson  
Linda Johnson  
Lawrence Chester  
Modesta H. Brown  
Central Florida International Black Women's Congress  
Regenia S. Miller, President  
Cal and Phyllis Conklin  
Francis C. Cooper  
Adrienne E. Darby  
Anthony & Ora Greene  
Pastor Valarie J. Henry  
Kelly Hill

Lorenzo Laws - Laws & Associates  
Polk County Board of County Commissioners  
Judeca Melo  
RSM Global Projects & Research  
Regenia S. Miller, President & Founder  
Alyse Hopkins Snell  
Mattie M. Streeter  
Marilee Truitt  
Dr. Lottie S. Tucker  
Joan Turner  
Gretchen Wilkerson  
Clemmie T. Williams

## ALPI Corporate Partners

*Bouchard Insurance · Collier County Housing Authority · Progress Energy ·  
Sanford ACE Hardware · Tedder, James, Worden & Associates, P.A.*

## Special Mentions

*Special thanks to the ALPI Board of Directors for your tireless fundraising and personal financial contributions throughout this past year and to the following for your generous financial support :*

Robert J. Watson, P.A.  
Caribbean American Cultural Group, Inc.  
Fitz H. Dickson  
Mt. Calvary Missionary Baptist Church  
Port Salerno Church of God  
Taylor Pest Management  
Hoover Chiropractic Office  
Reich & Mancini, P.A.  
Levy Chiropractic Center  
Male Trend of Florida, Inc.

New Mt. Zion Missionary Baptist Church  
Mark Stewart Matthews  
Jack & Debra Sobel  
Matt Hankins & Malloy Hankins  
Ulysses & Sequita Knight  
Felecia Walker  
Curtis Dean  
Charles & Priscilla Sawicki  
Robin Hicks-Connors  
Vicki Wackeen & Thomas Wackeen

# 2005 Board of Directors Closeout Meeting

## Annual Corporate Membership Business

### Agenda

Saturday, January 28, 2006

11:15 a.m. - 12:00 p.m.

- |       |  |                                   |
|-------|--|-----------------------------------|
| I.    | Call to Order  | William Holt, Chairperson         |
| II.   | Invocation   | Lester Roberts, Board Member      |
| III.  | Acknowledgements<br>Regional Advisory/Policy Council     | Grace Miller, Board Member        |
| IV.   | Adoption of Minutes                                      | Josephine Howard, Board Secretary |
| V.    | Annual Financial Report                                  | Christine Samuel, Board Treasurer |
| VI.   | Annual Report  | William Holt, Chairperson         |
|       | Program Overview   | Deloris Johnson, CEO              |
| VII.  | New Business:<br>Introduction of 2006 Board of Directors |                                   |
| VIII. | Adjournment  | William Holt, Chairperson         |

# Annual Corporate Meeting Luncheon and Board Installation

12:00 noon - 2:30 p.m.

Master of Ceremonies - Gregory Robinson  
Lakeland Police Department - Crime Prevention Unit  
Pastor of Revelations Community Baptist Church - Tampa, FL

Presentation of Colors ..... American Legion - Post 201, Winter Haven, FL  
Musical Selection ..... Maxie Hunter, Former ALPI Board Member, Winter Haven, FL  
Invocation ..... Bishop Albert Weaver, Lotela Church of God, Lakeland, FL  
Welcome and Occasion ..... Patricia Gamble, ALPI Board Member, Lakeland, FL  
Musical Selection ..... Maxie Hunter, Former ALPI Board Member, Winter Haven, FL  
Message from the Chair ..... William Holt, ALPI Board Chairperson, Vero Beach, FL

## LUNCH

Artistic Presentation ..... Olympia Lamar, 8th Grade Student-Jewett School of the Arts, Winter Haven, FL  
Introduction of Keynote Speaker..... Josephine Howard, ALPI Board Member, Haines City, FL  
Keynote Speaker ..... Derrick Len Span  
Former Nat'l President of the Community Action Partnership (CAP), Washington, DC  
Special Recognition .....Christine Samuel, ALPI Board Member, Spring Hill, FL  
Presentations and Awards/Chairman Awards .....Deloris Johnson, ALPI CEO, Lakeland, FL  
William Holt, ALPI Board Chairperson  
Board Installations ..... William A. Sweat, Esq., Sweat & Reed, PA, Lakeland, FL  
Closing Remarks ..... William Holt, ALPI Board Chairperson  
Deloris Johnson, ALPI CEO

## Highlights - Regional Advisory Councils

**SOUTHERN REGION** The Southern Region Advisory Council began over thirty-eight (38) years ago as a vehicle for the Minute Maid Company to: explore the needs of the community, channel resources to meet those needs, help survey the needs of the people, and form a sense of community among its members and constituents. The Southern Region Advisory Council remains a significant force in Eastern Polk County and parts of Highlands County, with members in Avon Park, Lake Wales, Bartow, and Frostproof. The Southern Region Advisory Council has conducted the following activities this past year in pursuit of ALPI's mission: Participated at the ALPI 2005 Annual Corporate Meeting; Participated at the ALPI 2005 Annual Family Picnic; Coordinated and served breakfast (60) and lunch (90) to the youth in Frostproof via the Polk County School Board's Summer Feeding Program; and, continued community support relationships with local agencies: Cargill, United Way, Polk County School Board, Polk County Board of County Commissioners, and Youth & Family Alternatives, Inc. The Annual Meeting was held on October 21, 2005 with Pastor Alvin Conner serving as "Keynote Speaker" urging more "*Unity in the Community*" through community involvement. Officers were elected as follows: Lester Roberts, Chairperson, Katie Clarke, Vice Chairperson, Annie Robinson, Secretary, and Terry Wellington, Treasurer.

**NORTHERN REGION** The Council decided that the FOCUS for 2005 would be *COMMUNITY FORUMS*. The forums were strategically held in areas of member representation: Winter Garden and Sanford. The purpose of the Community Forums was to impart information to community residents regarding available resources. A Resource Panel was set up in each forum, and the resources and information provided were in over 20 areas, including: Job Training and Placement, Drug Free Living, School Programs, Farm Worker Services, Senior Services, Health, Consumer Credit Counseling, Housing, Legal Services, Head Start, etc. Northern Region Programs and Activities stem around numerous partnerships, including The Department of Children and Families who have donated computers for "ACCESS", an online program that allows residents to apply for Food Stamps and Medicaid. Scholarship Guidelines have been established for the 2006 program year that will be available for students who are chosen according to need. Money will be raised for this purpose. Officers were elected as follows: Grace Miller, Chairperson (also appointed to the ALPI Board of Directors), Charlie Mae Wilder, Vice Chairperson, Constance Anderson, Secretary, Marva Hawkins, Treasurer, and Willie Williams, Parliamentarian.

**CENTRAL REGION** The Council had eighteen members and two tasks ahead of it this past year. One was to plan and host the Agency-wide Annual Picnic and Reunion. The other task was to plan the community-wide Central Region Annual Meeting function. In addition, the Council performed extensive volunteer work in the community. This year that included individual participation and group activities. Among these activities were planning and conducting activities for children at the Annual Picnic, which involved writing contests, poetry contests, sports competitions, and award presentations for over 100 children aged 3 - 17. Over 300 persons were also hosted at the annual reunion and picnic. This was a very large undertaking, but all the members of the Council worked very hard to make it a great success! This year the theme for the Central Region's Annual Meeting was *Impacting Our Children's Education*. Our special guest at the Annual Meeting was Dr. Gail McKinzie, Superintendent of Polk County Schools. The event was very well attended by the Polk County Community and was advertised in the local media, including radio stations in the Polk County area. Officers were elected as follows: Johnnie McNair, Chairperson, Viola Le'One', Vice Chairperson, Ruby Willix, Secretary, Jacqueline Rentz, Assistant Secretary, Julia Miller, Treasurer, and Clarence Grier, Parliamentarian.

**EASTERN REGION** The Eastern Region Advisory Council continued to make a difference in the community this past year. The goal was to involve children and families in community activities. Some council members participated in Child Care and Head Start/ Early Head Start center activities along-side participating parents. The participation included the Head Start/Early Head Start Self Assessment. The Council held its 2005 Annual Meeting on October 15, 2005. The theme for the Annual Meeting was "Back to Basics - A Call for Education. The Advisory Council accomplished its goal of community and family involvement in council activities. 150 plus parents and community individuals from the St. Lucie County community attended the meeting, as well as ALPI Head Start/ Early Head Start and Child Care parents and children. The keynote Speaker was Minister Denny Hart of the First Missionary Baptist Church, in Vero Beach, Florida. His remarks supported the Council's theme for the annual meeting. The following members were re-elected to the council: Fannie Moore, Constance Griffin, William Holt and Francis Cooper.



# Accomplishments

## Service Delivery Activities and Significant Outcomes

### DETERMINING THE NEEDS

The Florida Survey Research Center (FSRC) implemented an agency-wide community assessment for the Agricultural and Labor Program (ALPI). The FSRC prepared a survey instrument that asked about a variety of service needs that individuals and families may have.

The ALPI Community Needs Assessment is conducted every three years and is used to determine the program needs and services. The major approaches used included:

- Surveying families currently receiving ALPI services (i.e., Head Start, Child Care, Housing, Emergency Assistance, etc.)
- Surveying local officials and community advocates, and directors of community based agencies, Community Action Agencies and other similar organizations
- Head Start and agency staff, parents, Policy Council, ALPI Regional Advisory Committees, and the Board of Directors completed surveys and participated in work groups to develop the survey instruments and review the results
- Review of census data, TANF and Food Stamp Data, and information on the WIC program

The assessment data collected reflects existing community needs and resources and has enabled the ALPI Board of Directors to establish its 5-Year Strategic Plan inclusive of goals, objectives and strategies. This will help to realize positive Outcomes for at-risk children, families, and farm workers.

### PROGRAM GOALS AND DESIRED OUTCOMES

As a result of the Community Assessment, the following six (6) goals and focus areas have been identified to address all aspects of the ALPI organizational structure, the processes to ensure efficiency, effectiveness, and quality, individual staff potential, and the mission of the agency – *Providing a constant flow of Children and Family Support Services.*

#### **Low-income (families) become more self sufficient**

Employment and Economic Self-Sufficiency  
Employment Skills  
Literacy Skills  
Housing: Obtaining and Maintenance

Employment  
Housing  
Available Essential Services  
Community Education

#### **Conditions in which low-income lives (families) are improved**

# Accomplishments

## Service Delivery Activities and Significant Outcomes

**Low-income families own a stake in their community**

Employment  
Housing  
Community Organizations  
Systems Advocacy and Reform  
Volunteer Opportunities

**Low-income people, especially vulnerable populations, achieve their potential by**

Encouragement and Positive Language Skills  
Time Management  
Modeling Positive Behavior for Children  
Participation in Support/Parent Education Groups  
Family Relationships  
Skills for Functioning in the Community  
Substance Abuse  
Physical Health  
Crisis Problems Related to Basic Subsistence  
Early Children Education and Development

**Partnerships among supporters and providers of services to the low-income (children and families) are achieved**

Governance  
Planning  
Outcome Results System  
Staff Training  
Staff Morals and Motivation  
Information Management

**Increase agency capacity to achieve results**

Governance  
Planning  
Outcome Results System  
Staff Training  
Staff Morals and Motivation  
Information Management  
Increased Funding Mobilized by the Agency

# Accomplishments

## Service Delivery Activities and Significant Outcomes

### SOLUTIONS – RESOURCES ACQUIRED TO GET THE JOB DONE

During the 2004 – 2005 program year, the ALPI organization continued to aggressively moved forward in its quest to maintain and identify both monetary and in-kind resources to fund and support services delivery and agency capacity building activities. The resources provided included local, state, federal and various corporate funding sources, including the United Way, U.S. Department of Health and Human Services, Florida Departments of Education, Health and Community Affairs, School Readiness Coalitions of Polk, Indian River, Saint Lucie and Okeechobee counties, and Polk County Opportunity Council. Other local partnerships with county and city governments included the Polk and St. Lucie County Commissioners, the City of Ft. Pierce government, the Ft. Pierce Housing Authority, and the St. Lucie County Board of Education. All played a significant role in the provision of in-kind resources that have enabled the ALPI organization to continue maintaining a cost effective service delivery system. Total funding and in-kind support is at over 16 million dollars and counting.

- Head Start/Early Head Start funded enrollment of 751 children was verified within 30 days of school opening
- The 85% daily attendance was maintained throughout the program year
- 511 Head Start children transitioned into the public schools
- All of the ALPI directly operated centers were re-licensed by the state and all but one of the Head Start Centers are currently accredited by the National Association for the Education of Young Children (NAEYC)
- 240 children were transported to and from the Head Start Centers daily in a 35-passenger bus, as well as five 65-passenger buses.

**Child Health Services Outcomes** - The percentage of baseline health services provided to Head Start and Early Head Start children for the period ending June 2005 was 100% for height and weight, blood pressure, dental, hemoglobin, vision and hearing, and lead.

**Family Assessed Outcomes** - Based on the Family Partnership Agreements that were initiated during the beginning of the 2004-2005 school year, the family services that were most often requested by the Head Start/Early Head Start families were in the areas of: family counseling/mental health services (8%), adult education/ESOL (19%), employment and job training (36%), and housing assistance along with emergency shelter services (37%). The service breakdown is as follows:

- 54 of 55 families identified as needing counseling / mental health services as a need have received services
- 98 of 130 families identified as needing adult education / ESOL as a need are currently pursuing this goal
- 212 of 247 families identified as needing employment and job training as a need are currently in training

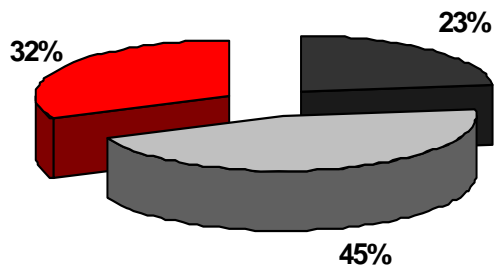
# Accomplishments

## Service Delivery Activities and Significant Outcomes

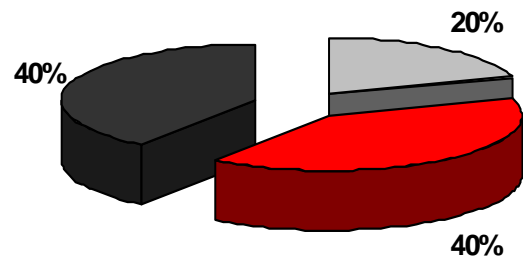
### STAFF DEVELOPMENT (Training and Technical Assistance)

The following chart represents the status of ALPI's compliance with the Head Start Act regarding teacher qualifications for the period ending June 2005. The data represents 38 Head Start Teachers (29 in directly operated centers and 9 in contracted centers) and 6 teachers at both Frostproof CDC and Okeechobee CDC (ALPI directly operated centers):

Head Start



Early Head Start



■ CDA ■ AA Degree ■ BS Degree or Higher

■ CDA ■ AA Degree ■ BS Degree or Higher

### CHILD AND FAMILY OUTCOMES FOR THE PERIOD ENDING JUNE 2005

**Head Start Children Outcomes** – ALPI has adopted the High Scope Educational Approach and now collects data on children in eight domains to ascertain the readiness of a child in the following areas (including the percentage of child outcomes for the period ending June 2005):

#### DOMAINS

- Early Childhood Approaches to Learning
- Early Childhood Creative Arts
- Early Childhood Mathematics
- Early Childhood Physical Health and Development
- Early Childhood Language and Literacy
- Early Childhood Nature and Science

#### CHILD OUTCOMES

- 79% of the four year olds scored in the advance range.
- 76% of the four year olds scored in the advance range.
- 62% of the four year olds scored in the advance range.
- 84% of the four year olds scored in the advance range.
- 67% of the four year olds scored in the advance range.
- 54% of the four year olds scored in the advance range.

# Accomplishments

## Service Delivery Activities and Significant Outcomes

### SCHOOL READINESS COALITION SUBSIDIZED CHILD CARE SERVICES

The following School Readiness Coalition Subsidized Child Care Enrollment and Attendance services were delivered via 75 public and private child care provider agreements (three of which are directly operated centers) and represents the number of children served by category:

Enrollment	St. Lucie	Indian River
Protective Services	308	87
Wages	461	191
Migrant	38	0
Income Eligible	1881	498

School Readiness Screenings were administered by ALPI for a total of 737 child care children in Indian River County.

### COMMUNITY SERVICES

Direct services, as indicated below, were provided to a total of 12,482 families and farm workers. In addition, a total of 37,446 families and farm workers were provided indirect services, a total of 25,684 families and farm workers were provided referral services, and In-Kind Services to support ALPI Community Services totaled \$120,000.

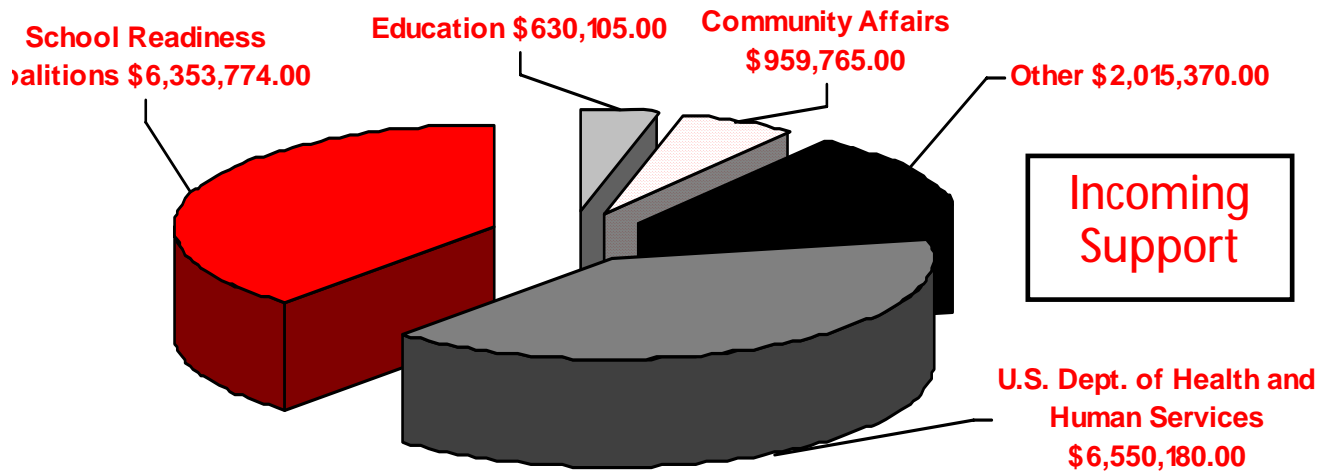
SERVICE AREA	OUTCOMES
LIHEAP	5964 clients served, exceeded goals
EHEAP	676 clients served, exceeded goals
WIA-167 EA	484 clients served, exceeded goals
WIA-167 ET	60 clients served, met goal
Step Ahead Youth	32 clients served, exceeded goals
Orlando Sentinel	932 families received toys that provided gifts for 3,805 children, exceeded goals
HUD Housing Counseling	66 clients served, exceeded goals

As we acknowledge some significant accomplishments during the 2005-2006 program year and our 37<sup>th</sup> anniversary, we have resolved to continue to “*Do whatever it Takes*” to continue to help at-risk families realize their human, social and economical potentials. As we close the book on another successful year, we are preparing to continue our quest to “Provide a constant flow of Children and Family Support Services”.

*Deloris Johnson, Chief Executive Officer*

## Statement of Activities

### Support and Revenue



	<u>2005</u>	<u>2004</u>
Expenses:		
Program Services		
Child Development	6,431,567	11,815,479
Food	423,869	452,426
Headstart	7,211,062	6,762,435
Social Services	251,913	243,947
Employment and Training	212,918	172,961
Energy	<u>937,608</u>	<u>891,350</u>
Total Program Services	15,468,937	20,338,598
Support Services:		
General Administration	<u>1,076,612</u>	<u>1,215,278</u>
Total Expenses	<u>16,545,549</u>	<u>21,553,876</u>
Decrease in Unrestricted Net Assets	(36,355)	(128,766)
Unrestricted net assets, beginning of year	<u>3,336,358</u>	<u>3,465,124</u>
Unrestricted net assets, end of year	<u>3,300,003</u>	<u>3,336,358</u>

## Statement of Financial Position

Current Assets	2005	2004
Cash and cash equivalents	521,812	466,766
Accounts Receivable, net	1,586,568	2,230,764
Prepaid Expenses	<u>77,125</u>	<u>74,410</u>
Total Current Assets	2,185,505	2,771,940
Property and equipment, net	2,840,909	2,767,131
Refundable Deposits	<u>9,871</u>	<u>9,871</u>
Total Assets	<u>5,036,285</u>	<u>5,548,942</u>
 <b><u>Liabilities and Unrestricted Net Assets</u></b>		
Current Liabilities		
Accounts Payable	1,032,663	1,640,380
Refundable Advances	232,360	116,141
Accrued Expenses		
Salaries and Wages	175,146	156,338
Vacation	119,977	112,783
Retirement Benefits	123,956	126,420
Other	48,684	47,135
Current portion of obligation under capital lease	<u>3,496</u>	<u>9,891</u>
Total Current Liabilities	1,736,282	2,209,088
Unrestricted Net Assets		
Unrestricted Net Assets	<u>3,330,003</u>	<u>3,336,358</u>
Total Liabilities and Unrestricted Net Assets	<u>5,036,285</u>	<u>5,548,942</u>

## Contact Information



### **CORPORATE OFFICE**

P.O. Box 3126  
Winter Haven, Florida 33885  
(863) 956-3491  
(863) 956-3357 Fax  
Admin@ALPI.org  
Website: [www.alpi.org](http://www.alpi.org)

### **Executive Office**

Deloris Johnson, Chief Executive Officer  
Extension 106 - [DJohnson@ALPI.org](mailto:DJohnson@ALPI.org)

Twila Smith, Executive Office Manager  
Extension 104 - [TSteward@ALPI.org](mailto:TSteward@ALPI.org)

### **ADMINISTRATION & COMMUNITY SERVICES**

#### Budget and Finance

Norris Ann Roland, Director  
Extension 110  
[NARoland@ALPI.org](mailto:NARoland@ALPI.org)

#### Human Resources

Yvonne Parham, Director  
Extension 102  
[YParham@ALPI.org](mailto:YParham@ALPI.org)

#### Community Services

Joan Turner, Director  
Extension 124  
[JTurner@ALPI.org](mailto:JTurner@ALPI.org)

### **CHILDREN & FAMILY SERVICES**

#### Eastern Region Administration Office

720 Delaware Avenue  
Ft. Pierce, Florida 34950  
(772) 466-2631  
(772) 464-3035 Fax

#### Head Start Services

Mary Jones, Director  
Extension 15  
[MJones@ALPI.org](mailto:MJones@ALPI.org)

#### Child Development & Early Head Start Services

Elizabeth Young, Director  
(863) 956-3491  
Extension 115  
[EYoung@ALPI.org](mailto:EYoung@ALPI.org)



## CORPORATE MEMBERSHIP

The tri-level Corporate Membership structure of The Agricultural and Labor Program, Inc. was adopted by the Board of Directors in September 1992. The levels of Corporate Membership are divided into the following classes:

- *CORPORATE MEMBERS - Advisory Council Members, Head Start Policy Council Members, and At-large Members. All Members in this class have voting rights pertaining to all applicable ALPI Corporation and Head Start matters.*
- *ASSOCIATE MEMBERS - All clients, volunteers, and other interested parties. All members in this class have voting rights pertaining to all ALPI Annual Corporate Meeting matters.*
- *EMPLOYEES - All ALPI current employees. All members in this class do not have voting rights pertaining to any ALPI Corporation matters.*

All persons interested in becoming a member of the ALPI Corporation must complete a Corporate Membership Application and must have a valid Corporate Membership Card in order to be eligible to vote and to be eligible to serve on the ALPI Advisory Council or the ALPI Board of Directors.

The ALPI Membership Committee conducts an Annual Membership Drive during the fall of each year. Membership applications, however, will be accepted throughout the year.

Please call The ALPI Central Office  
(1-800-330-3491) for additional information.

# Corporate Application

The Agricultural and Labor Program, Inc.  
P.O. Box 3126  
Winter Haven, FL 33885

Name \_\_\_\_\_  
(Last) (First) (Middle Initial)

Mailing Address \_\_\_\_\_  
(Street No./P.O. Box)

\_\_\_\_\_  
(City, County, State, Zip Code)

S.S. # \_\_\_\_\_ Home # ( ) \_\_\_\_\_ - \_\_\_\_\_ Business # ( ) \_\_\_\_\_ - \_\_\_\_\_

Race: [ ] Black [ ] White [ ] Hispanic [ ] Other Marital Status: [ ] Married [ ] Unmarried (single, divorced, widowed)

Household Size \_\_\_\_\_ Yrs. of Education \_\_\_\_\_ Occupation \_\_\_\_\_ Yrs. on Job \_\_\_\_\_ Yrs. in Profession \_\_\_\_\_

Registered Voter: [ ] Yes [ ] No Able to attend nights/weekends meetings: [ ] Yes [ ] No

Applicant's Signature \_\_\_\_\_ Date \_\_\_\_\_

*Annual Recruitment is conducted January through August. All membership cards will be mailed in the month of September.  
Membership Applications received after August will be mailed in September of the following year.*

**I certify that this application has been reviewed by the Regional Advisory Membership Committee.**

Regional Advisory Chairperson \_\_\_\_\_ Date \_\_\_\_\_

## (Official Use Only)

The Agricultural and Labor Program, Inc.

Regional Applicant resides in [ ] Central [ ] Eastern [ ] Northern [ ] Southern

We certify that this application has been reviewed by the Board Membership Committee

Chairperson \_\_\_\_\_ Vice Chairperson \_\_\_\_\_

I.D. Number \_\_\_\_\_ Date Approved \_\_\_\_\_



HEAD START: THE NATION'S PRIDE...

*Celebrating 40 Years  
of Success*



National Head Start Association



Joins Head Start in  
Celebrating its  
40 th  
Anniversary

*Head Start: Serving more than  
22 million children since 1965*

# The Agricultural and Labor Program, Inc.

ALPI's Programs and Services Are Funded in Part By:



City of Ft. Pierce, County of St. Lucie, Florida Department of Education, Adult Migrant Division, Florida Department of Health, St. Lucie County School Board, Youth and Family Alternatives, Workforce Development Board of Flagler and Volusia Counties, Early Learning Coalition of St. Lucie County, Inc. and Early Learning Coalition of Indian River, Martin and Okeechobee Counties, Inc.